

Kir5.1 Polyclonal Antibody

Catalog number: 12696-1-AP

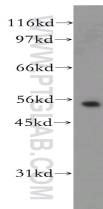
Size: 24 µg/150 µl

Source: Rabbit

Isotype: IgG

Synonyms:

KCNJ16; BIR9, KCNJ16, KIR5.1



human brain tissue were subjected to SDS PAGE followed by western blot with 12696-1-AP(KCNJ16 antibody) at dilution of 1:400

Applications

Tested applications:	ELISA, WB
Species specificity:	Human,Mouse,Rat; other species not tested.
Calculated Kir5.1 MW:	418aa,48kd
Observed Kir5.1 MW:	48kd
Positive WB detected in	Human brain tissue
Recommended dilution:	WB: 1:200-1:2000

Application key: WB = Western blotting, IHC = Immunohistochemistry, IF = Immunofluorescence, IP = Immunoprecipitation

Immunogen information

Immunogen:	Ag3405
GenBank accession number:	BC033038
Gene ID (NCBI):	3773
Full name:	Potassium inwardly-rectifying channel, subfamily J, member 16

Product information

Purification method:	Antigen affinity purification
Storage:	PBS with 0.02% sodium azide and 50% glycerol pH 7.3. Store at -20°C.