

## UBE3C Polyclonal Antibody

Catalog number: 12333-1-AP

Size: 28 µg/150 µl

Source: Rabbit

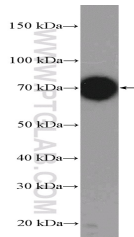
Isotype: IgG

Synonyms:

UBE3C; KIAA0010, KIAA10,

UBE3C, ubiquitin protein ligase

E3C



mouse liver tissue were subjected to SDS PAGE followed by western blot with 12333-1-AP( UBE3C Antibody) at dilution of 1:300

### Applications

Tested applications:	ELISA, WB
Species specificity:	Human,Mouse,Rat; other species not tested.
Calculated UBE3C MW:	124 kDa
Observed UBE3C MW:	70 kDa
Positive WB detected in	Mouse liver tissue, HepG2 cells
Recommended dilution:	WB: 1:200-1:1000

Application key: WB = Western blotting, IHC= Immunohistochemistry, IF = Immunofluorescence, IP = Immunoprecipitation

### Immunogen information

Immunogen:	Ag2966
GenBank accession number:	BC026241
Gene ID (NCBI):	9690
Full name:	Ubiquitin protein ligase E3C

### Product information

Purification method:	Antigen affinity purification
Storage:	PBS with 0.1% sodium azide and 50% glycerol pH 7.3. Store at -20°C.