

TIMM17B Polyclonal Antibody

Catalog number: 11062-1-AP

Size: 75 µg/150 µl

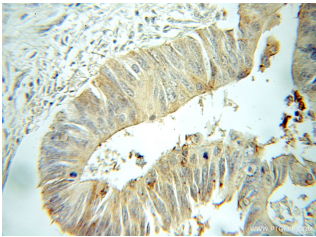
Source: Rabbit

Isotype: IgG

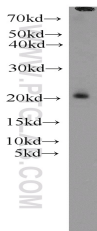
Synonyms:

TIMM17B; DXS9822, JM3,

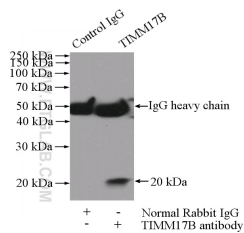
TIM17B, TIMM17B



Immunohistochemical of paraffin-embedded human colon cancer using 11062-1-AP(TIMM17B antibody) at dilution of 1:50 (under 10x lens)



mouse heart tissue were subjected to SDS PAGE followed by western blot with 11062-1-AP(TIMM17B antibody) at dilution of 1:600



IP Result of anti-TIMM17B (IP:11062-1-AP, 3µg; Detection:11062-1-AP 1:500) with mouse heart tissue lysate 4000µg.

Applications

Tested applications:	ELISA, IHC, IP, WB
Cited applications:	WB
Species specificity:	Human, Mouse, Rat; other species not tested.
Cited species:	Human
Calculated TIMM17B MW:	18 kDa
Observed TIMM17B MW:	17-20 kDa
Positive WB detected in	Mouse heart tissue, mouse liver tissue
Positive IP detected in	Mouse heart tissue
Positive IHC detected in	Human colon cancer tissue
Recommended dilution:	WB: 1:200-1:2000
	IP: 1:200-1:2000
	IHC: 1:20-1:200

Application key: WB = Western blotting, IHC = Immunohistochemistry, IF = Immunofluorescence, IP = Immunoprecipitation

Immunogen information

Immunogen:	Ag1504
GenBank accession number:	BC010142
Gene ID (NCBI):	10245
Full name:	Translocase of inner mitochondrial membrane 17 homolog B (yeast)

Product information

Purification method:	Antigen affinity purification
Storage:	PBS with 0.1% sodium azide and 50% glycerol pH 7.3. Store at -20°C.