

RABAC1 Polyclonal Antibody

Catalog number: 10542-1-AP

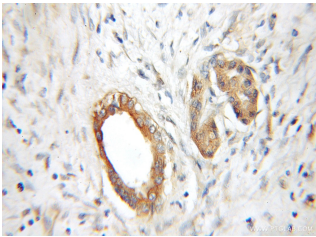
Size: 39 µg/150 µl

Source: Rabbit

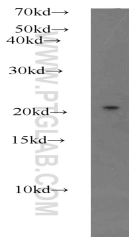
Isotype: IgG

Synonyms:

RABAC1; PRA1, PRA1 family protein 1, PRAF1, Rab acceptor 1 (prenylated), RABAC1, YIP3



Immunohistochemical of paraffin-embedded human pancreas cancer using 10542-1-AP (RABAC1 antibody) at dilution of 1:50 (under 10x lens)



HEK-293 cells were subjected to SDS PAGE followed by western blot with 10542-1-AP (RABAC1 antibody) at dilution of 1:500

Applications

Tested applications:	ELISA, IHC, WB
Cited applications:	IHC, WB
Species specificity:	Human, Mouse, Rat; other species not tested.
Cited species:	Mouse
Calculated RABAC1 MW:	21 kDa
Observed RABAC1 MW:	21 kDa
Positive WB detected in	HEK-293 cells, human pancreas tissue
Positive IHC detected in	Human pancreas cancer tissue
Recommended dilution:	WB: 1:200-1:2000 IHC: 1:20-1:200

Application key: WB = Western blotting, IHC = Immunohistochemistry, IF = Immunofluorescence, IP = Immunoprecipitation

Immunogen information

Immunogen:	Ag0830
GenBank accession number:	BC008950
Gene ID (NCBI):	10567
Full name:	Rab acceptor 1 (prenylated)

Product information

Purification method:	Antigen affinity purification
Storage:	PBS with 0.1% sodium azide and 50% glycerol pH 7.3. Store at -20°C.