

GSK3A Polyclonal Antibody

Catalog number: 13419-1-AP

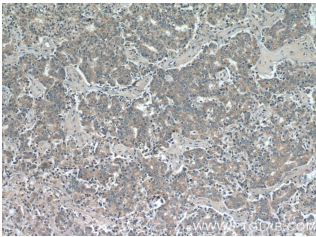
Size: 58 µg/150 µl

Source: Rabbit

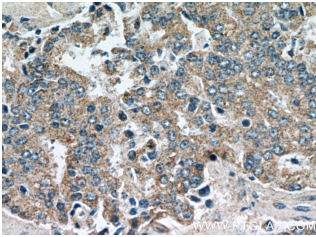
Isotype: IgG

Synonyms:

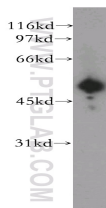
GSK3A; DKFZp686D0638, GSK3
alpha, GSK3A



Immunohistochemical of paraffin-embedded human prostate cancer using 13419-1-AP (GSK3A antibody) at dilution of 1:50 (under 10x lens)



Immunohistochemical of paraffin-embedded human prostate cancer using 13419-1-AP (GSK3A antibody) at dilution of 1:50 (under 40x lens)



human serum tissue were subjected to SDS PAGE followed by western blot with 13419-1-AP (GSK3A antibody) at dilution of 1:300

Applications

Tested applications:	ELISA, WB, IHC
Species specificity:	Human, Mouse, Rat, Zebrafish; other species not tested.
Calculated GSK3A MW:	483aa, 51kd
Observed GSK3A MW:	51kd
Positive WB detected in	Human serum tissue, mouse liver tissue
Positive IHC detected in	Human prostate cancer tissue, human lung cancer tissue, human ovary tumor tissue
Recommended dilution:	WB: 1:500-1:5000 IHC: 1:20-1:200

Application key: WB = Western blotting, IHC = Immunohistochemistry, IF = Immunofluorescence, IP = Immunoprecipitation

Immunogen information

Immunogen:	Ag4168
GenBank accession number:	BC027984
Gene ID (NCBI):	2931
Full name:	Glycogen synthase kinase 3 alpha

Product information

Purification method:	Antigen affinity purification
Storage:	PBS with 0.02% sodium azide and 50% glycerol pH 7.3. Store at -20°C.