

TMPRSS2 PolyAb Antibody

Catalog number: 14437-1-AP

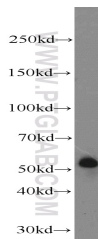
Size: 47 µg/150 µl

Source: Rabbit

Isotype: IgG

Synonyms:

TMPRSS2; FLJ41954; PP9284;
PRSS10



COLO 320 cells were subjected to SDS PAGE followed by western blot with 14437-1-AP(TMPRSS2 Antibody) at dilution of 1:1000

Applications

Tested applications:	ELISA, WB
Species specificity:	Human,Mouse,Rat; other species not tested.
Positive WB detected in:	COLO 320 cells
Calculated TMPRSS2 MW:	54kd
Observed TMPRSS2 MW:	54 kDa
Recommended dilution:	WB: 1:500-1:5000

Application key: WB = Western blotting, IHC = Immunohistochemistry, IF = Immunofluorescence, IP = Immunoprecipitation, FC = Flow cytometry

Immunogen information

Immunogen:	Ag5824
GenBank accession number:	BC051839
Gene ID (NCBI):	7113
Full name:	Transmembrane protease, serine 2

Product information

Purification method:	Antigen affinity purification
Storage:	PBS with 0.1% sodium azide and 50% glycerol pH 7.3. Store at -20°C.