

KBTBD2 Polyclonal Antibody

Catalog number: 13871-1-AP

Size: 20 µg/150 µl

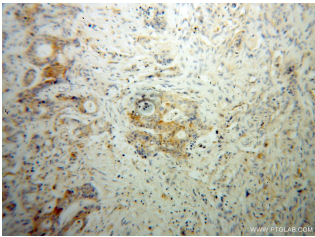
Source: Rabbit

Isotype: IgG

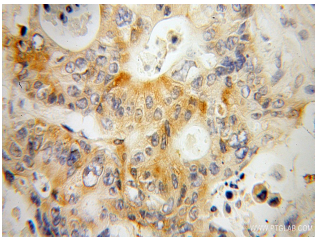
Synonyms:

KBTBD2; BKLHD1, KBTBD2,

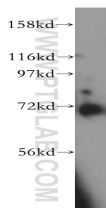
KIAA1489



Immunohistochemical of paraffin-embedded human colon cancer using 13871-1-AP(KBTBD2 antibody) at dilution of 1:50 (under 10x lens)



Immunohistochemical of paraffin-embedded human colon cancer using 13871-1-AP(KBTBD2 antibody) at dilution of 1:50 (under 40x lens)



COLO 320 cells were subjected to SDS PAGE followed by western blot with 13871-1-AP(KBTBD2 antibody) at dilution of 1:500

Applications

Tested applications:	ELISA, IHC, WB
Species specificity:	Human, Mouse, Rat; other species not tested.
Calculated KBTBD2 MW:	622aa, 71 kDa
Observed KBTBD2 MW:	
Positive WB detected in	COLO 320 cells
Positive IHC detected in	Human colon cancer tissue
Recommended dilution:	WB: 1:200-1:2000 IHC: 1:20-1:200

Application key: WB = Western blotting, IHC = Immunohistochemistry, IF = Immunofluorescence, IP = Immunoprecipitation

Immunogen information

Immunogen:	Ag4823
GenBank accession number:	BC047107
Gene ID (NCBI):	25948
Full name:	Kelch repeat and BTB (POZ) domain containing 2

Product information

Purification method:	Antigen affinity purification
Storage:	PBS with 0.02% sodium azide and 50% glycerol pH 7.3. Store at -20°C.