

SCRG1 Polyclonal Antibody

Catalog number: 14038-1-AP

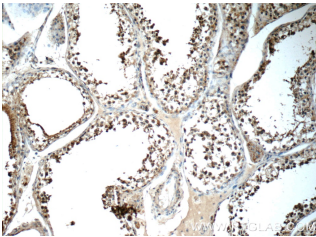
Size: 47 µg/150 µl

Source: Rabbit

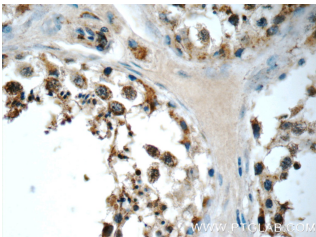
Isotype: IgG

Synonyms:

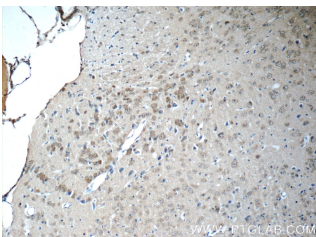
SCRG1; scrapie responsive protein 1, SCRG 1, SCRG1



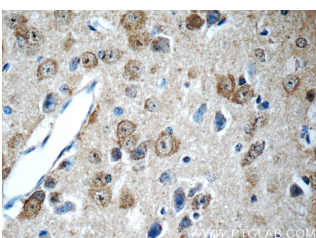
Immunohistochemistry of paraffin-embedded human testis tissue slide using 14038-1-AP (SCRG1 Antibody) at dilution of 1:50 (under 10x lens)



Immunohistochemistry of paraffin-embedded human testis tissue slide using 14038-1-AP (SCRG1 Antibody) at dilution of 1:50 (under 40x lens)



Immunohistochemistry of paraffin-embedded mouse brain tissue slide using 14038-1-AP (SCRG1 Antibody) at dilution of 1:50 (under 10x lens)



Immunohistochemistry of paraffin-embedded mouse brain tissue slide using 14038-

Applications

Tested applications:	ELISA, IHC
Species specificity:	Human, Mouse, Rat; other species not tested.
Calculated SCRG1 MW:	11 kDa
Observed SCRG1 MW:	
Positive IHC detected in	Mouse brain tissue, human testis tissue
Recommended dilution:	IHC: 1:20-1:200

Application key: WB = Western blotting, IHC = Immunohistochemistry, IF = Immunofluorescence, IP = Immunoprecipitation

Immunogen information

Immunogen:	Ag5104
GenBank accession number:	BC017583
Gene ID (NCBI):	11341
Full name:	Scrapie responsive protein 1

Product information

Purification method:	Antigen affinity purification
Storage:	PBS with 0.1% sodium azide and 50% glycerol pH 7.3. Store at -20°C.

**1-AP(SCRG1 Antibody) at
dilution of 1:50 (under 40x
lens)**