

## CRMP1 Polyclonal Antibody

Catalog number: 10317-1-AP

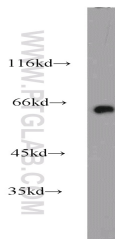
Size: 20 µg/150 µl

Source: Rabbit

Isotype: IgG

Synonyms:

CRMP1; CRMP 1, CRMP1,  
DPYSL1, DRP 1, DRP1, ULIP 3,  
ULIP3, Unc 33 like  
phosphoprotein 3



mouse brain tissue were subjected to SDS PAGE followed by western blot with 10317-1-AP(CRMP1 antibody) at dilution of 1:1000

### Background

CRMP1(Collapsin response mediator protein 1) is also named as DPYSL1, ULIP3, DRP-1 and belongs to the collapsin response mediator protein family, which are a family of five cytoplasmic proteins predominantly expressed in the developing nervous system. CRMP1, the predicted 62-kDa protein and its 75-kDa isoform corresponding to its N-terminal splice variant already described for embryonic, neonatal, and adult brain of the rat are evidenced in the cortex of adult mouse(PMID:15834957). This protein is involved in invasion, and aggressiveness of prolactin pituitary tumors.

### Applications

Tested applications:	ELISA, WB
Species specificity:	Human,Mouse,Rat; other species not tested.
Calculated CRMP1 MW:	62 kDa
Observed CRMP1 MW:	62 kDa
Positive WB detected in	Mouse brain tissue, mouse lung tissue
Recommended dilution:	WB: 1:500-1:5000

Application key: WB = Western blotting, IHC = Immunohistochemistry, IF = Immunofluorescence, IP = Immunoprecipitation

### Immunogen information

Immunogen:	Ag0369
GenBank accession number:	BC000252
Gene ID (NCBI):	1400
Full name:	Collapsin response mediator protein 1

### Product information

Purification method:	Antigen affinity purification
Storage:	PBS with 0.1% sodium azide and 50% glycerol pH 7.3. Store at -20°C.