

RPA1 Polyclonal Antibody

Catalog number: 12448-1-AP

Size: 20 µg/150 µl

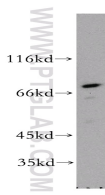
Source: Rabbit

Isotype: IgG

Synonyms:

RPA1; HSSB; MST075; REPA1;

RF-A; RP-A; RPA70



A431 cells were subjected to SDS PAGE followed by western blot with 12448-1-AP (RPA1 Antibody) at dilution of 1:500

Applications

Tested applications:	ELISA, WB
Species specificity:	Human, mouse, rat; other species not tested.
Positive WB detected in:	A431 cells, Y79 cells
Calculated RPA1 MW:	616aa, 68kd
Observed RPA1 MW:	70kd
Recommended dilution:	WB: 1:200-1:2000

Application key: WB = Western blotting, IHC = Immunohistochemistry, IF = Immunofluorescence, IP = Immunoprecipitation, FC = Flow cytometry

Immunogen information

Immunogen:	Ag3067
GenBank accession number:	BC018126
Gene ID (NCBI):	6117
Full name:	Replication protein A1, 70kDa

Product information

Purification method:	Antigen affinity purification
Storage:	PBS with 0.02% sodium azide and 50% glycerol pH 7.3. Store at -20°C.