

FIP1L1 Polyclonal Antibody

Catalog number: 12276-1-AP

Size: 36 µg/150 µl

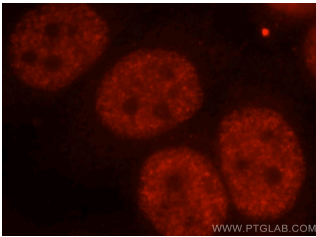
Source: Rabbit

Isotype: IgG

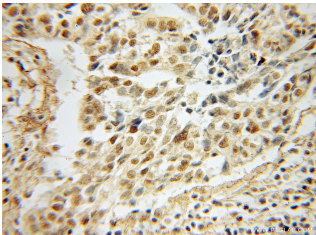
Synonyms:

FIP1L1; FIP1L1, FIP1L1

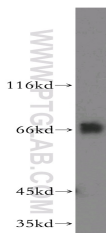
PDGFRalpha, Rhe, FIP1, Factor
interacting with PAP



Immunofluorescent analysis of MCF-7 cells, using FIP1L1 antibody 12276-1-AP at 1:25 dilution and Rhodamine-labeled goat anti-rabbit IgG (red).



Immunohistochemical of paraffin-embedded human ovary tumor using 12276-1-AP (FIP1L1 antibody) at dilution of 1:50 (under 10x lens)



K-562 cells were subjected to SDS PAGE followed by western blot with 12276-1-AP (FIP1L1 antibody) at dilution of 1:300

Applications

Tested applications:	ELISA, WB, IHC, IF
Species specificity:	Human, mouse, rat; other species not tested.
Calculated FIP1L1 MW:	594aa, 66 kDa
Observed FIP1L1 MW:	67kd
Positive WB detected in:	K-562 cells
Positive IHC detected in:	Human ovary tumor
Positive IF detected in:	MCF-7
Recommended dilution:	WB: 1:200-1:2000 IHC: 1:20-1:200 IF: 1:10-1:100

Application key: WB = Western blotting, IHC = Immunohistochemistry, IF = Immunofluorescence, IP = Immunoprecipitation

Immunogen information

Immunogen:	Ag2921
GenBank accession number:	BC017724
Gene ID (NCBI):	81608
Full name:	FIP1 like 1 (S. cerevisiae)

Product information

Purification method:	Antigen affinity purification
Storage:	PBS with 0.02% sodium azide and 50% glycerol pH 7.3. Store at -20°C.