

RABGAP1L Polyclonal Antibody

Catalog number: 13894-1-AP

Size: 24 µg/150 µl

Source: Rabbit

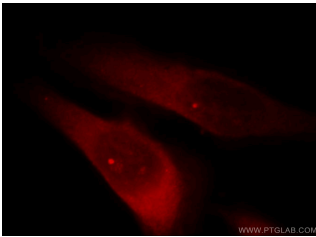
Isotype: IgG

Synonyms:

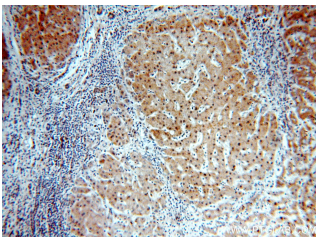
RABGAP1L; DKFZp686E1450,

HHL, KIAA0471, RABGAP1L,

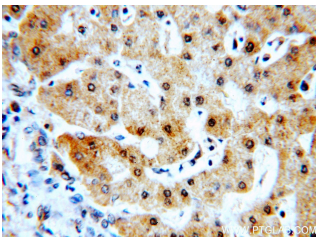
TBC1D18



Immunofluorescent analysis of HeLa cells, using RABGAP1L antibody 13894-1-AP at 1:25 dilution and Rhodamine-labeled goat anti-rabbit IgG (red).



Immunohistochemical of paraffin-embedded human hepatocirrhosis using 13894-1-AP (RABGAP1L antibody) at dilution of 1:100 (under 10x lens)



Immunohistochemical of paraffin-embedded human hepatocirrhosis using 13894-1-AP (RABGAP1L antibody) at dilution of 1:100 (under 40x lens)

Applications

Tested applications:	ELISA, IHC, IF, WB, IP
Species specificity:	Human, Mouse, Rat; other species not tested.
Calculated RABGAP1L MW:	815aa, 93 kDa
Observed RABGAP1L MW:	93-105 kDa
Positive WB detected in:	HeLa cells, MCF7 cells
Positive IP detected in:	HeLa cells
Positive IHC detected in:	Human hepatocirrhosis tissue, human placenta tissue
Positive IF detected in:	HeLa cells
Recommended dilution:	WB: 1:500-1:5000
	IP: 1:500-1:5000
	IHC: 1:20-1:200
	IF: 1:10-1:100

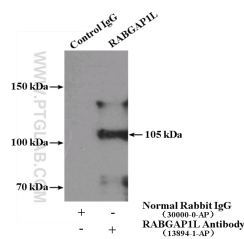
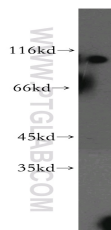
Application key: WB = Western blotting, IHC = Immunohistochemistry, IF = Immunofluorescence, IP = Immunoprecipitation

Immunogen information

Immunogen:	Ag4856
GenBank accession number:	BC041888
Gene ID (NCBI):	9910
Full name:	RAB GTPase activating protein 1-like

Product information

Purification method:	Antigen affinity purification
Storage:	PBS with 0.02% sodium azide and 50% glycerol pH 7.3. Store at -20°C.



HeLa cells were subjected to SDS PAGE followed by western blot with 13894-1-AP(RABGAP1L antibody) at dilution of 1:1000

IP Result of anti-RABGAP1L (IP:13894-1-AP, 4ug; Detection:13894-1-AP 1:1000) with HeLa cells lysate 3200ug.