

## CRX Polyclonal Antibody

Catalog number: 12047-1-AP

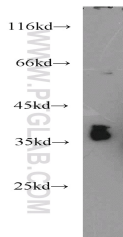
Size: 51 µg/150 µl

Source: Rabbit

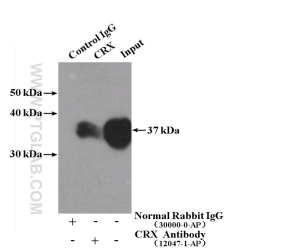
Isotype: IgG

Synonyms:

CRX; cone rod homeobox, Cone rod homeobox protein, CORD2, CRD, CRX, LCA7, OTX3



Y79 cells were subjected to SDS PAGE followed by western blot with 12047-1-AP (CRX antibody) at dilution of 1:500



IP Result of anti-CRX (IP:12047-1-AP, 4µg; Detection:12047-1-AP 1:500) with Y79 cells lysate 1920µg.

### Background

Cone-rod homeobox (Crx) is a homeodomain transcription factor and member of the Otx family, which has been thought to play a critical role in determining and maintaining the phenotype of both pinealocytes and retinal photoreceptors [PMID:17467693]. In the mammalian retina, Crx plays an essential role in the normal development and maintenance of cones and rods and regulates expression of the network of genes that characterize the retina [PMID:17653270]. Elimination of Crx by disruption of the homeobox domain results in loss of the image-forming visual system but not the non-image-forming visual system controlling circadian rhythms [PMID:20438719].

### Applications

Tested applications:	ELISA, WB, IP
Cited applications:	Co-IP, WB
Species specificity:	Human, Mouse, Rat; other species not tested.
Cited species:	Human
Calculated CRX MW:	299aa, 32 kDa
Observed CRX MW:	37 kDa
Positive WB detected in:	Y79 cells
Positive IP detected in:	Y79 cells
Recommended dilution:	WB: 1:200-1:2000 IP: 1:200-1:2000

Application key: WB = Western blotting, IHC = Immunohistochemistry, IF = Immunofluorescence, IP = Immunoprecipitation

### Immunogen information

Immunogen:	Ag2677
GenBank accession number:	BC016664
Gene ID (NCBI):	1406
Full name:	Cone-rod homeobox

### Product information

Purification method:	Antigen affinity purification
Storage:	PBS with 0.1% sodium azide and 50% glycerol pH 7.3. Store at -20°C.