

Renin receptor,ATP6AP2 Polyclonal Antibody

Catalog number: 10926-1-AP

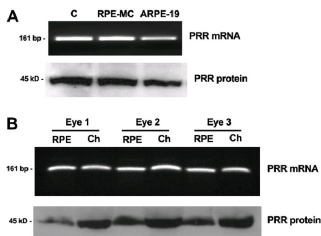
Size: 45 µg/150 µl

Source: Rabbit

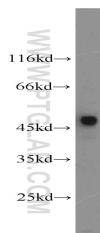
Isotype: IgG

Synonyms:

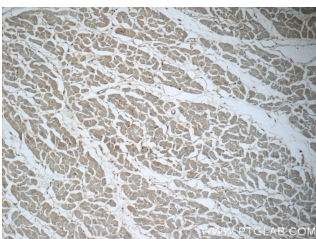
ATP6AP2; APT6M8 9,
ATP6AP2, ATP6IP2, ATP6M8 9,
CAPER, ELDF10, HT028, M8 9,
MRXE, MSTP009, N14F, PRR,
PSEC0072, Renin receptor,
RENIN RECEPTOR,ATP6AP2,
Renin/prorenin receptor, V
ATPase M8.9 subunit, XMRE



WB result from Oscar Alcazar, et al, (Pro)renin receptor is expressed in human retinal pigment epithelium and participates in extracellular matrix remodeling, *Exp Eye Res.* 89(5) 638-47 (2009) (PMID:19580809). Eye 45kd.



mouse eye tissue were subjected to SDS PAGE followed by western blot with 10926-1-AP (RENIN-RECEPTOR,ATP6AP2 antibody) at dilution of 1:600



Immunohistochemistry of paraffin-embedded human heart tissue slide using 10926-1-AP (RENIN-RECEPTOR, ATP6AP2 Antibody) at dilution of 1:50 (under 10x lens)

Background

ATP6AP2, also named as ATP6IP2, CAPER, ELDF10, N14F, ATP6M8-9, Renin receptor and prorenin receptor, is believed to potentiate the renin-angiotensin system (RAS), conferring to prorenin, a likely pathological role at tissue level. The PRR has been identified in the microvascular endothelial cells of the retina, in which it seems to be involved in pathological neovascularization processes. The present study demonstrates for the first time that the PRR is expressed in human ATP6AP2 and suggests a molecular mechanism by which hypertension may exacerbate the pathology of dry AMD. ATP6AP2 functions as a renin and prorenin cellular receptor. It may mediate renin-dependent cellular responses by activating ERK1 and ERK2. By increasing the catalytic efficiency of renin in AGT/angiotensinogen conversion to angiotensin I, it may also play a role in the renin-angiotensin system (RAS). Defects in ATP6AP2 are a cause of mental retardation X-linked with epilepsy (MRXE). (PMID:19580809)

Applications

Tested applications:

ELISA, WB, IHC

Cited applications:

IHC, WB

Species specificity:

Human, Mouse, Rat; other species not tested.

Cited species:

Human

Calculated Renin

39kd

receptor,ATP6AP2 MW:

Observed Renin

45-47 kDa

receptor,ATP6AP2 MW:

Positive WB detected in

Mouse eye tissue, human retinal pigment epithelium tissue, Y79 cells

Positive IHC detected in

Human heart tissue

Recommended dilution:

WB: 1:200-1:2000

IHC: 1:20-1:200

Application key: WB = Western blotting, IHC = Immunohistochemistry, IF = Immunofluorescence, IP = Immunoprecipitation

Immunogen information

Immunogen:

Ag1360

GenBank accession number:

BC010395

Gene ID (NCBI):

10159

Full name:

ATPase, H⁺ transporting, lysosomal accessory protein 2

Product information

Purification method:

Antigen affinity purification

Storage:

PBS with 0.1% sodium azide and 50% glycerol pH 7.3. Store at -20°C.