

REX1 Polyclonal Antibody

Catalog number: 13503-1-AP

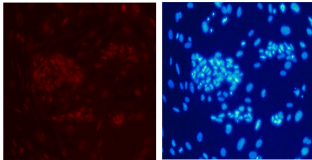
Size: 26 µg/150 µl

Source: Rabbit

Isotype: IgG

Synonyms:

REX1; EloA BP1, ELOABP1,
Elongin A binding protein 1,
KIAA1138, REX1, REXO1, RNA
exonuclease 1 homolog,
TCEB3BP1



Confocal immunofluorescent analysis of human embryonic stem cells with 13503-1-AP at dilution of 1:50. The PE shows staining with 13503-1-AP/PE. The DAPI shows nuclear staining by DAPI. (20X)

Confocal immunofluorescent analysis of human embryonic stem cells with 13503-1-AP at dilution of 1:50. The PE shows staining with 13503-1-AP/PE. The DAPI shows nuclear staining by DAPI. (20X)

Background

REXO1, also named as EloA-BP1, ELOABP1, KIAA1138 and TCEB3BP1, is transcription elongation factor B polypeptide 3-binding protein 1. REXO1 did not affect either the rate of transcription elongation by RNA polymerase II or the transcriptional activity of TCEB3 in vitro. This gene is different to the REX1 which is an embryo stem cell marker.

Applications

Tested applications:	ELISA, IF
Species specificity:	Human, Mouse, Rat; other species not tested.
Calculated REX1 MW:	1221aa, 132 kDa
Observed REX1 MW:	132kd
Positive IF detected in:	Human embryonic stem cells
Recommended dilution:	IF: 1:20-1:200

Application key: WB = Western blotting, IHC = Immunohistochemistry, IF = Immunofluorescence, IP = Immunoprecipitation

Immunogen information

Immunogen:	Ag4334
GenBank accession number:	BC032244
Gene ID (NCBI):	57455
Full name:	REX1, RNA exonuclease 1 homolog (S. cerevisiae)

Product information

Purification method:	Antigen affinity purification
Storage:	PBS with 0.02% sodium azide and 50% glycerol pH 7.3. Store at -20°C.