

## LY96/MD2 Polyclonal Antibody

Catalog number: 11784-1-AP

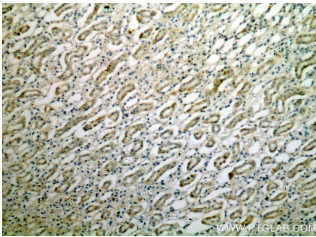
Size: 20 µg/150 µl

Source: Rabbit

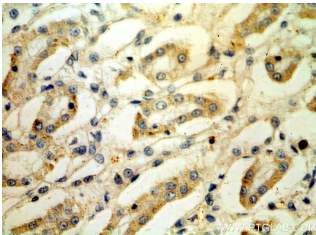
Isotype: IgG

Synonyms:

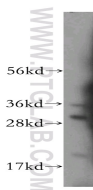
LY96; ESOP 1, ESOP1, Ly 96,  
LY96, lymphocyte antigen 96,  
MD 2, MD2, Protein MD 2



Immunohistochemical of paraffin-embedded human kidney using 11784-1-AP (LY96 antibody) at dilution of 1:50 (under 10x lens)



Immunohistochemical of paraffin-embedded human kidney using 11784-1-AP (LY96 antibody) at dilution of 1:50 (under 40x lens)



U-937 cells were subjected to SDS PAGE followed by western blot with 11784-1-AP (LY96 antibody) at dilution of 1:400

### Background

LY96, also named as ESOP1 or MD 2, is a small secreted glycoprotein that can bind to both the hydrophobic portion of LPS and to the extracellular domain of TLR4. The interaction between MD-2 and LPS bridges the two TLR4 molecules and induces the dimerization of LPS-MD-2-TLR4, which forms the structural basis for biological functions of TLR4/MD-2 complex. Due to its essential role in mediating the interaction between LPS and TLR4, MD-2 has been extensively explored as a therapeutic target for treatment of inflammatory disorders.

### Applications

Tested applications:	ELISA, WB, IHC
Species specificity:	Human; other species not tested.
Calculated LY96/MD2 MW:	160aa, 18 kDa
Observed LY96/MD2 MW:	20 kDa and 30 kDa and 35 kDa
Positive WB detected in	U-937 cells
Positive IHC detected in	Human kidney tissue
Recommended dilution:	WB: 1:200-1:2000 IHC: 1:20-1:200

Application key: WB = Western blotting, IHC = Immunohistochemistry, IF = Immunofluorescence, IP = Immunoprecipitation

### Immunogen information

Immunogen:	Ag2447
GenBank accession number:	BC020690
Gene ID (NCBI):	23643
Full name:	Lymphocyte antigen 96

### Product information

Purification method:	Antigen affinity purification
Storage:	PBS with 0.1% sodium azide and 50% glycerol pH 7.3. Store at -20°C.