

RHBDL2 Polyclonal Antibody

Catalog number: 12467-1-AP

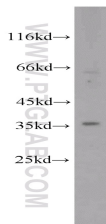
Size: 35 µg/150 µl

Source: Rabbit

Isotype: IgG

Synonyms:

RHBDL2; RHBDL2, Rhomboid
like protein 2, Rhomboid
related protein 2, RRP2



HeLa cells were subjected to SDS
PAGE followed by western blot with
12467-1-AP (RHBDL2 antibody) at
dilution of 1:500

Applications

Tested applications:	ELISA, WB
Species specificity:	Human, Mouse, Rat; other species not tested.
Calculated RHBDL2 MW:	303aa, 34 kDa
Observed RHBDL2 MW:	34-37 kDa
Positive WB detected in:	HeLa cells
Recommended dilution:	WB: 1:200-1:2000

Application key: WB = Western blotting, IHC = Immunohistochemistry, IF = Immunofluorescence, IP = Immunoprecipitation

Immunogen information

Immunogen:	Ag3142
GenBank accession number:	BC013103
Gene ID (NCBI):	54933
Full name:	Rhomboid, veinlet-like 2 (Drosophila)

Product information

Purification method:	Antigen affinity purification
Storage:	PBS with 0.1% sodium azide and 50% glycerol pH 7.3. Store at -20°C.