

SCFD1 Polyclonal Antibody

Catalog number: 12569-1-AP

Size: 56 µg/150 µl

Source: Rabbit

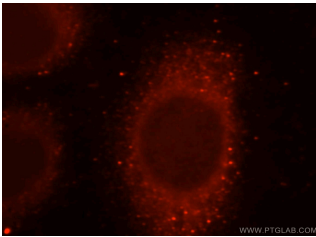
Isotype: IgG

Synonyms:

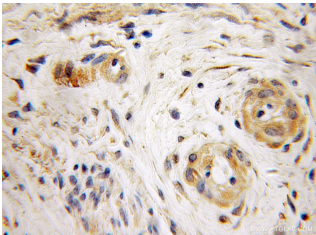
SCFD1; C14orf163, KIAA0917,

RA410, SCFD1, SLY1, SLY1

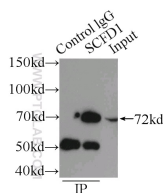
homolog, Sly1p, STXBP1L2



Immunofluorescent analysis of HeLa cells, using SCFD1 antibody 12569-1-AP at 1:25 dilution and Rhodamine-labeled goat anti-rabbit IgG (red).



Immunohistochemical of paraffin-embedded human endometrial cancer using 12569-1-AP (SCFD1 antibody) at dilution of 1:50 (under 10x lens)



IP Result of anti-SCFD1 (IP:12569-1-AP, 3µg; Detection:12569-1-AP 1:500) with HeLa cells lysate 2150µg.

Background

SCFD1, also named as C14orf163, KIAA0917, STXBP1L2, Sly1p and SLY1, belongs to the STXBP/unc-18/SEC1 family. It is a component of the syntaxin-5 SNARE complex which regulates the early secretory pathway of eukaryotic cells at the level of endoplasmic reticulum (ER) to Golgi transport. (PMID:21242315) SCFD1 plays a role in SNARE-pin assembly and Golgi-to-ER retrograde transport via its interaction with COG4. It is involved in vesicular transport between the endoplasmic reticulum and the Golgi.

Applications

Tested applications:	ELISA, WB, IHC, IF, IP
Cited applications:	WB
Species specificity:	Human, Mouse, Rat; other species not tested.
Cited species:	Human
Calculated SCFD1 MW:	642aa, 72kd
Observed SCFD1 MW:	72kd
Positive WB detected in	A549 cells, human kidney tissue, human liver tissue
Positive IP detected in	HeLa cells
Positive IHC detected in	Human endometrial cancer tissue
Positive IF detected in	HeLa cells
Recommended dilution:	WB: 1:500-1:5000 IP: 1:200-1:2000 IHC: 1:20-1:200 IF: 1:10-1:100

Application key: WB = Western blotting, IHC = Immunohistochemistry, IF = Immunofluorescence, IP = Immunoprecipitation

Immunogen information

Immunogen:	Ag3234
GenBank accession number:	BC017734
Gene ID (NCBI):	23256
Full name:	Sec1 family domain containing 1

Product information

Purification method:	Antigen affinity purification
Storage:	PBS with 0.1% sodium azide and 50% glycerol pH 7.3. Store at -20°C.