

CLIC4 Polyclonal Antibody

Catalog number: 12298-2-AP

Size: 30 µg/150 µl

Source: Rabbit

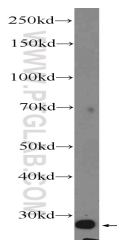
Isotype: IgG

Synonyms:

CLIC4; CLIC4, CLIC4L,

DKFZp566G223, FLJ38640, H1,

huH1, MTCLIC, p64H1



mouse kidney tissue were subjected to SDS PAGE followed by western blot with 12298-2-AP(CLIC4 Antibody) at dilution of 1:600

Applications

Tested applications:	ELISA, WB
Species specificity:	Human,Mouse,Rat; other species not tested.
Calculated CLIC4 MW:	253aa,29 kDa
Observed CLIC4 MW:	29 kDa
Positive WB detected in	Mouse kidney tissue, human kidney tissue, mouse ovary tissue
Recommended dilution:	WB: 1:200-1:2000

Application key: WB = Western blotting, IHC = Immunohistochemistry, IF = Immunofluorescence, IP = Immunoprecipitation

Immunogen information

Immunogen:	Ag2942
GenBank accession number:	BC012444
Gene ID (NCBI):	25932
Full name:	Chloride intracellular channel 4

Product information

Purification method:	Antigen affinity purification
Storage:	PBS with 0.1% sodium azide and 50% glycerol pH 7.3. Store at -20°C.