

OLR1 Polyclonal Antibody

Catalog number: 11837-1-AP

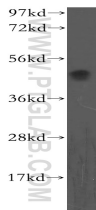
Size: 20 µg/150 µl

Source: Rabbit

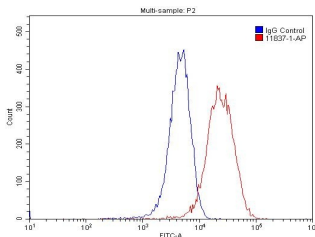
Isotype: IgG

Synonyms:

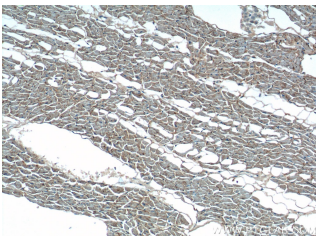
OLR1; CLEC8A, hLOX 1, Lectin like oxLDL receptor 1, LOX 1, LOX1, OLR1, Ox LDL receptor 1, SCARE1



human liver tissue were subjected to SDS PAGE followed by western blot with 11837-1-AP(OLR1 antibody) at dilution of 1:500



1X10⁶ HUVEC cells were stained with 0.2ug OLR1 antibody (11837-1-AP, red) and control antibody (blue). Fixed with 4% PFA blocked with 3% BSA (30 min). Alexa Fluor 488-conjugated AffiniPure Goat Anti-Rabbit IgG(H+L) with dilution 1:1500.



Immunohistochemistry of paraffin-embedded human heart tissue slide using 11837-1-AP(OLR1 Antibody) at dilution of 1:200 (under 10x lens).

Applications

Tested applications:	ELISA, WB, FC, IP, IHC
Cited applications:	WB
Species specificity:	Human; other species not tested.
Cited species:	HUMAN
Calculated OLR1 MW:	273aa,31 kDa
Observed OLR1 MW:	48-52 kDa
Positive WB detected in	Human liver tissue
Positive IP detected in	L02 cells
Positive IHC detected in	Human heart tissue
Positive FC detected in	HUVEC cells
Recommended dilution:	WB: 1:200-1:2000 IP: 1:200-1:2000 IHC: 1:50-1:500 FC: N/A

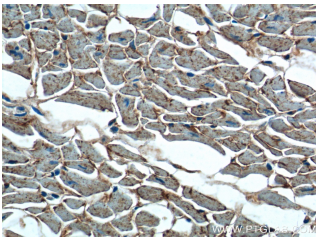
Application key: WB = Western blotting, IHC = Immunohistochemistry, IF = Immunofluorescence, IP = Immunoprecipitation

Immunogen information

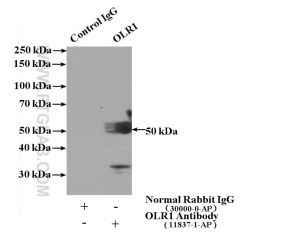
Immunogen:	Ag2437
GenBank accession number:	BC022295
Gene ID (NCBI):	4973
Full name:	Oxidized low density lipoprotein (lectin-like) receptor 1

Product information

Purification method:	Antigen affinity purification
Storage:	PBS with 0.1% sodium azide and 50% glycerol pH 7.3. Store at -20°C.



Immunohistochemistry of paraffin-embedded human heart tissue slide using 11837-1-AP(OLR1 Antibody) at dilution of 1:200 (under 40x lens).



IP Result of anti-OLR1 (IP:11837-1-AP, 4ug; Detection:11837-1-AP 1:800) with L02 cells lysate 1800ug.