

SIGLEC5 Polyclonal Antibody

Catalog number: 13230-1-AP

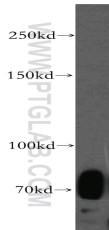
Size: 20 µg/150 µl

Source: Rabbit

Isotype: IgG

Synonyms:

SIGLEC5; CD170, CD33 antigen
like 2, CD33L2, OB binding
protein 2, OB BP2, OB BP2,
Obesity binding protein 2,
SIGLEC 5, SIGLEC5



HL-60 cells were subjected to SDS
PAGE followed by western blot with
13230-1-AP(SIGLEC5 antibody) at
dilution of 1:500

Applications

Tested applications:	ELISA, WB
Species specificity:	Human; other species not tested.
Calculated SIGLEC5 MW:	551aa,61 kDa
Observed SIGLEC5 MW:	70 kDa
Positive WB detected in	HL-60 cells, K-562 cells
Recommended dilution:	WB: 1:500-1:5000

Application key: WB = Western blotting, IHC = Immunohistochemistry, IF = Immunofluorescence, IP = Immunoprecipitation

Immunogen information

Immunogen:	Ag4101
GenBank accession number:	BC029896
Gene ID (NCBI):	8778
Full name:	Sialic acid binding Ig-like lectin 5

Product information

Purification method:	Antigen affinity purification
Storage:	PBS with 0.02% sodium azide and 50% glycerol pH 7.3. Store at -20°C.