

Choline kinase alpha Polyclonal Antibody

Catalog number: 13520-1-AP

Size: 39 µg/150 µl

Source: Rabbit

Isotype: IgG

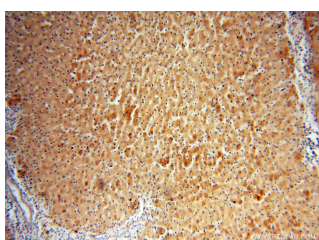
Synonyms:

CHKA; CHETK alpha, CHK,

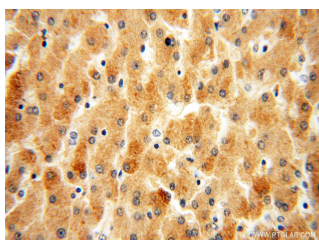
CHKA, Choline kinase alpha,

CK, CKI, EK, Ethanolamine

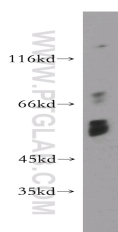
kinase;



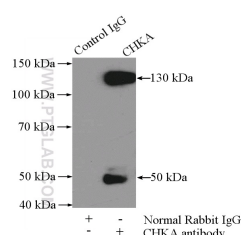
Immunohistochemical of paraffin-embedded human liver using 13520-1-AP(CHKA antibody) at dilution of 1:50 (under 10x lens)



Immunohistochemical of paraffin-embedded human liver using 13520-1-AP(CHKA antibody) at dilution of 1:50 (under 40x lens)



COLO 320 cells were subjected to SDS PAGE followed by western blot with 13520-1-AP(CHKA antibody) at dilution of 1:300



IP Result of anti-CHKA

Background

CHKA(Choline kinase alpha) is also named as CHK, CKI, EK(Ethanolamine kinase) and belongs to the choline/ethanolamine kinase family. Choline kinase (ATP:choline phosphotransferase) is a cytosolic enzyme that catalyzes the committed step in the synthesis of PC by the CDP-choline pathway. The enzyme catalyzes the phosphorylation of choline with ATP to form phosphocholine and ADP(PMID:9506987). It has 2 isoforms produced by alternative splicing with the molecular weight of 52 kDa and 50 kDa.

Applications

Tested applications:	ELISA, WB, IHC, IP
Cited applications:	IHC, WB
Species specificity:	Human,Mouse,Rat; other species not tested.
Cited species:	Human, mouse, rat
Caculated Choline kinase alpha MW:	439aa,52 kDa
Observed Choline kinase alpha MW:	50 kDa,52 kDa
Positive WB detected in	COLO 320 cells, mouse colon tissue
Positive IP detected in	Mouse spleen tissue
Positive IHC detected in	Human liver tissue
Recommended dilution:	WB: 1:200-1:2000
	IP: 1:200-1:2000
	IHC: 1:20-1:200

Application key: WB = Western blotting, IHC = Immunohistochemistry, IF = Immunofluorescence, IP = Immunoprecipitation

Immunogen information

Immunogen:	Ag4761
GenBank accession number:	BC036471
Gene ID (NCBI):	1119
Full name:	Choline kinase alpha

Product information

Purification method:	Antigen affinity purification
Storage:	PBS with 0.02% sodium azide and 50% glycerol pH 7.3. Store at -20°C.

(IP:13520-1-AP, 4ug;
Detection:13520-1-AP 1:500)
with mouse spleen tissue
lysate 4000ug.