

Kallistatin Polyclonal Antibody

Catalog number: 11430-2-AP

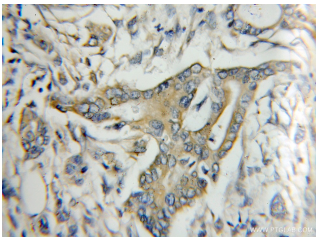
Size: 30 µg/150 µl

Source: Rabbit

Isotype: IgG

Synonyms:

SERPINA4; KAL, Kallikrein inhibitor, kallistatin, KLST, KST, Peptidase inhibitor 4, PI 4, PI4, Serpin A4, SERPINA4



Immunohistochemical of paraffin-embedded human pancreas cancer using 11430-2-AP (SERPINA4 antibody) at dilution of 1:50 (under 10x lens)



human spleen tissue were subjected to SDS PAGE followed by western blot with 11430-2-AP (SERPINA4 antibody) at dilution of 1:400

Applications

Tested applications:	ELISA, WB, IHC
Species specificity:	Human; other species not tested.
Calculated Kallistatin MW:	49 kDa
Observed Kallistatin MW:	49 kDa
Positive WB detected in	Human spleen tissue, human serum tissue
Positive IHC detected in	Human pancreas cancer tissue
Recommended dilution:	WB: 1:500-1:5000 IHC: 1:20-1:200

Application key: WB = Western blotting, IHC = Immunohistochemistry, IF = Immunofluorescence, IP = Immunoprecipitation

Immunogen information

Immunogen:	Ag1962
GenBank accession number:	BC014992
Gene ID (NCBI):	5267
Full name:	Serpin peptidase inhibitor, clade A (alpha-1 antiproteinase, antitrypsin), member 4

Product information

Purification method:	Antigen affinity purification
Storage:	PBS with 0.1% sodium azide and 50% glycerol pH 7.3. Store at -20°C.