

ST2 Polyclonal Antibody

Catalog number: 11920-1-AP

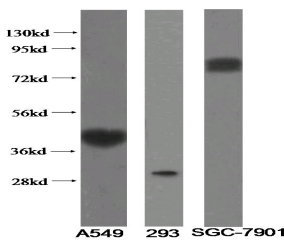
Size: 30 µg/150 µl

Source: Rabbit

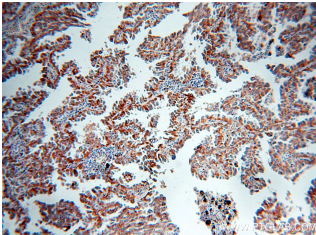
Isotype: IgG

Synonyms:

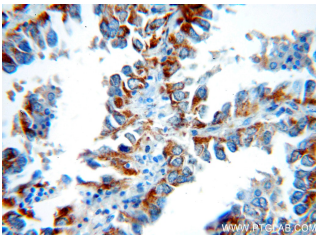
IL1RL1; DER4, FIT 1, IL1RL1,
interleukin 1 receptor like 1,
Protein ST2, ST2, ST2L, ST2V,
T1



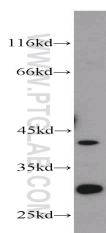
Variants of IL1RL1 recognized by 11920-1-AP.



Immunohistochemical of paraffin-embedded human lung cancer using 11920-1-AP(IL1RL1 antibody) at dilution of 1:50 (under 10x lens)



Immunohistochemical of paraffin-embedded human lung cancer using 11920-1-AP(IL1RL1 antibody) at dilution of 1:50 (under 40x lens)



mouse brain tissue were subjected to SDS PAGE followed by western blot with

Background

Protein ST2, also known as IL1RL1, is a member of the interleukin 1 receptor family. The gene of ST2 encodes three splice variants: a soluble secreted form, a transmembrane form and a form of undetermined localization. This antibody recognizes at least 80kd, 40kd and 30kd forms in different tissues and cells.

Applications

Tested applications:	ELISA, WB, IHC
Cited applications:	IF, IHC
Species specificity:	Human, Mouse, Rat; other species not tested.
Cited species:	Human
Calculated ST2 MW:	63 kDa, 37 kDa, 30 kDa
Observed ST2 MW:	30 kDa, 40 kDa
Positive WB detected in	Mouse brain tissue
Positive IHC detected in	Human lung cancer tissue, human heart tissue
Recommended dilution:	WB: 1:500-1:5000 IHC: 1:50-1:500

Application key: WB = Western blotting, IHC = Immunohistochemistry, IF = Immunofluorescence, IP = Immunoprecipitation

Immunogen information

Immunogen:	Ag2555
GenBank accession number:	BC030975
Gene ID (NCBI):	9173
Full name:	Interleukin 1 receptor-like 1

Product information

Purification method:	Antigen affinity purification
Storage:	PBS with 0.1% sodium azide and 50% glycerol pH 7.3. Store at -20°C.

**11920-1-AP(IL1RL1 antibody)
at dilution of 1:1000**