



IBT BIOSERVICES

4 Research Court, Suite 300
Rockville, MD 20850
877-411-2041
Services@ibtbioservices.com

Recombinant Reston Ebolavirus Glycoprotein minus the Transmembrane Region (rRESTV GPdTM)

Catalog #: 0504-015

Lot #: 1306007

Description: Mature, recombinant, His-tagged Reston ebolavirus glycoprotein minus the transmembrane domain (rRESTV GPdTM) is supplied as purified protein. rRESTV GPdTM is produced in Sf9 insect cells using baculovirus for expression and is purified by column chromatography.

Storage: 2-3 weeks at -20°C, -80°C long term

Size: 100 µg of protein is supplied in PBS (supplemented with 10% glycerol, arginine and glutamic acid) at a concentration of **1.14 mg/mL**. The theoretical molecular weight of the protein is ~72 kDa including the His-tag, without glycosylation. Because of the glycosylated nature of this protein, migration in an SDS-PAGE gel results in a broad, diffuse band.

Relevance: Recombinant RESTV glycoprotein provides a means as a control protein for immunoassays and a tool to enhance Filovirus research.

Western Blot: Quality control testing demonstrates strong detection of GP null and GP1 under reduced conditions when using IBT's Rabbit anti-RESTV GP polyclonal antibody (Cat #: 0305-001).

Related Products:

IBT provides a wide array of anti-filovirus specific antibodies, recombinant proteins and other infectious disease reagents. Please see our website, www.ibtbioservices.com for more details.

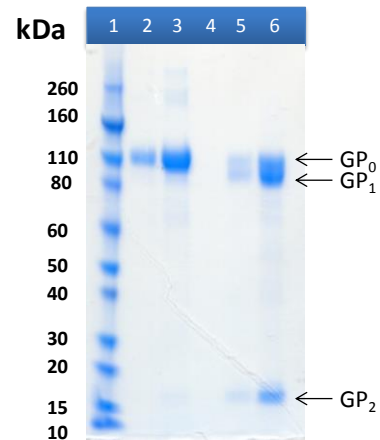
Intended for research use only. Not for human, therapeutic, or diagnostic applications.

The buyer cannot sell or otherwise transfer this product for Commercial Purposes

without written approval of Integrated BioTherapeutics, Inc.

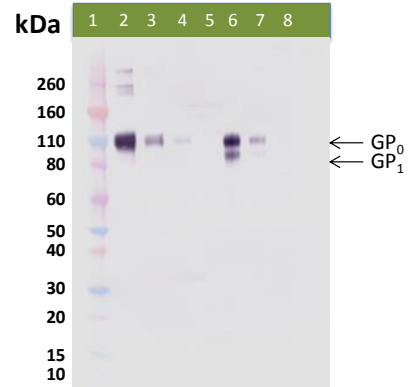
Copyright 2014. Integrated BioTherapeutics, Inc. All rights reserved.

SDS-PAGE



SDS-PAGE and stain demonstrating 1 µg (lanes 2 and 5) and 5 µg (lanes 3 and 6) of rRESTV GPdTM protein under nonreducing (lanes 2 and 3) and reducing conditions (lanes 5 and 6). Lane 1 denotes Novex MW markers. Lane 4 was intentionally left blank.

Western Blot Detection



Western blot detection of rRGPdTM at 500 ng (lanes 2 and 6), 100 ng (lanes 3 and 7) and 50 ng (lanes 4 and 8) under nonreducing (lanes 2-4) and reducing conditions (lanes 6-8). Detected with IBT's rabbit anti-RESTV GP pAb (Cat #: 0305-001) at 500 ng/mL and an anti-mouse AP conjugate followed by substrate. Lane 1 denotes Novex MW markers. Lane 5 was intentionally left blank.