

MRRF Polyclonal Antibody

Catalog number: 12357-2-AP

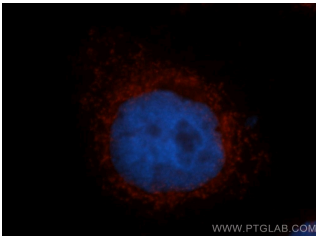
Size: 20 µg/150 µl

Source: Rabbit

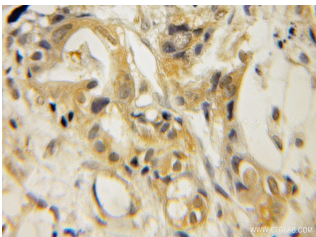
Isotype: IgG

Synonyms:

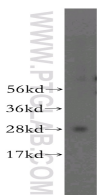
MRRF; MRFF, MRRF, MTRRF,
RRF



Immunofluorescent analysis of MCF-7 cells, using MRRF antibody 12357-2-AP at 1:50 dilution and Rhodamine-labeled goat anti-rabbit IgG (red). Blue pseudocolor = DAPI (fluorescent DNA dye).



Immunohistochemical of paraffin-embedded human pancreas cancer using 12357-2-AP (MRRF antibody) at dilution of 1:50 (under 10x lens)



human lung tissue were subjected to SDS PAGE followed by western blot with 12357-2-AP (MRRF antibody) at dilution of 1:500

Applications

Tested applications:	ELISA, WB, IHC, IF
Species specificity:	Human, Mouse, Rat; other species not tested.
Calculated MRRF MW:	262aa, 29kd
Observed MRRF MW:	29kd
Positive WB detected in	Human lung tissue
Positive IHC detected in	Human pancreas cancer tissue
Positive IF detected in	MCF-7 cells
Recommended dilution:	WB: 1:250 - 1:1000 IHC: 1:25 - 1:100 IF: 1:25 - 1:100

Application key: WB = Western blotting, IHC = Immunohistochemistry, IF = Immunofluorescence, IP = Immunoprecipitation

Immunogen information

Immunogen:	Ag3021
GenBank accession number:	BC013049
Gene ID (NCBI):	92399
Full name:	Mitochondrial ribosome recycling factor

Product information

Purification method:	Antigen affinity purification
Storage:	PBS with 0.1% sodium azide and 50% glycerol pH 7.3. Store at -20°C.