

Emerin Polyclonal Antibody

Catalog number: 10351-1-AP

Size: 75 µg/150 µl

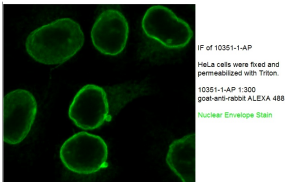
Source: Rabbit

Isotype: IgG

Synonyms:

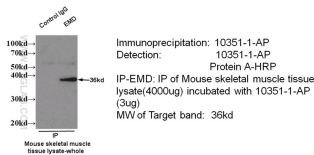
EMD; EDMD, EMD, Emerin,

LEMDS5, STA



IF result of anti-EMD(10351-1-AP) in HeLa cell by Dr. Ralph Kehlenbach.

IP & WB of 10351-1-AP with Mouse skeletal muscle tissue



IP result of EMD antibody (10351-1-AP for IP and Detection) with mouse skeletal muscle tissue lysate.



Immunofluorescent analysis of HeLa cells, using EMD antibody 10351-1-AP at 1:25 dilution and Rhodamine-labeled goat anti-rabbit IgG (red).

Background

Emerin (Emery-Dreifuss muscular dystrophy) (EMD or EDMD), a serine-rich nuclear membrane protein, is a member of the nuclear lamina-associated protein family. EMD may mediate membrane anchorage to the cytoskeleton by stabilizing and promoting the formation of a nuclear actin cortical network. Defects in EMD gene are the cause of Emery-Dreifuss muscular dystrophy type 1 (EDMD1), a degenerative myopathy characterized by weakness and atrophy of muscle without involvement of the nervous system, early contractures of the elbows Achilles tendons and spine, and cardiomyopathy associated with cardiac conduction defects. EMD inhibits beta-catenin activity by preventing its accumulation in the nucleus and is involved in HIV-1 infection.

Applications

Tested applications:

ELISA, WB, IP, IF, FC

Species specificity:

Human, Mouse; other species not tested.

Calculated Emerin MW:

29 kDa

Observed Emerin MW:

35kd

Positive WB detected in

HeLa cells, A431 cells, COLO 320 cells, HEK-293 cells, HepG2 cells, Jurkat cells, MCF7 cells

Positive IP detected in

Mouse skeletal muscle tissue

Positive IF detected in

HeLa cells, A431 cells, MCF-7 cells

Positive FC detected in

HEK-293T cells

Recommended dilution:

WB: 1:500-1:5000

IP: 1:500-1:5000

IF: 1:10-1:100

FC: N/A

Application key: WB = Western blotting, IHC = Immunohistochemistry, IF = Immunofluorescence, IP = Immunoprecipitation

Immunogen information

Immunogen:

Ag0236

GenBank accession number: BC000738

Gene ID (NCBI):

2010

Full name:

Emerin

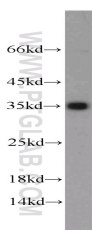
Product information

Purification method:

Antigen affinity purification

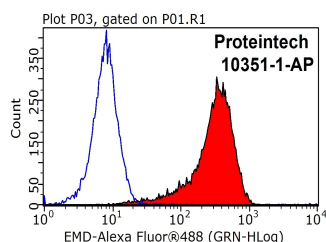
Storage:

PBS with 0.1% sodium azide and 50% glycerol pH 7.3. Store at -20°C.



HeLa cells were subjected to SDS PAGE followed by

1X10⁶ HEK-293T cells were stained with 0.2ug EMD



western blot with 10351-1-AP(EMD antibody) at dilution of 1:1000 antibody (10351-1-AP, red) and control antibody (blue). Fixed with 90% MeOH blocked with 3% BSA (30 min). Alexa Fluor 488-conjugated AffiniPure Goat Anti-Rabbit IgG(H+L) with dilution 1:1000.