

NELF Polyclonal Antibody

Catalog number: 12244-1-AP

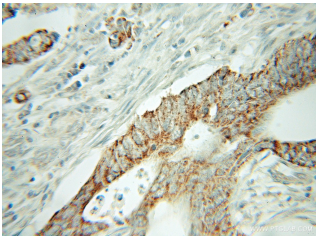
Size: 20 µg/150 µl

Source: Rabbit

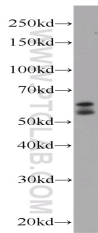
Isotype: IgG

Synonyms:

NELF; nasal embryonic LHRH factor, NELF, NSMF



Immunohistochemical of paraffin-embedded human colon cancer using 12244-1-AP (NELF antibody) at dilution of 1:100 (under 10x lens)



HeLa cells were subjected to SDS PAGE followed by western blot with 12244-1-AP (NELF Antibody) at dilution of 1:1000

Background

NSMF, also named as NELF (Nasal embryonic LHRH factor), couples NMDA-sensitive glutamate receptor signaling to the nucleus and triggers long-lasting changes in the cytoarchitecture of dendrites and spine synapse processes. NSMF has some isoforms with MW 44 kDa and 55-60 kDa. This antibody recognizes all the isoforms.

Applications

Tested applications:	ELISA, IHC, WB
Species specificity:	Human, Mouse, Rat; other species not tested.
Calculated NELF MW:	507aa, 56 kDa
Observed NELF MW:	54-60 kDa
Positive WB detected in	HeLa cells, human brain tissue, human colon tissue, mouse testis tissue
Positive IHC detected in	Human colon cancer tissue
Recommended dilution:	WB: 1:500-1:5000 IHC: 1:20-1:200

Application key: WB = Western blotting, IHC = Immunohistochemistry, IF = Immunofluorescence, IP = Immunoprecipitation

Immunogen information

Immunogen:	Ag2888
GenBank accession number:	BC016862
Gene ID (NCBI):	26012
Full name:	Nasal embryonic LHRH factor

Product information

Purification method:	Antigen affinity purification
Storage:	PBS with 0.1% sodium azide and 50% glycerol pH 7.3. Store at -20°C.