

## KLK3/PSA Polyclonal Antibody

Catalog number: 10679-1-AP

Size: 50 µg/150 µl

Source: Rabbit

Isotype: IgG

Synonyms:

KLK3; APS, Gamma

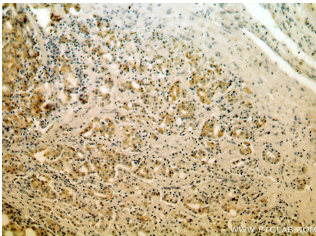
seminoprotein, hK3, Kallikrein

3, kallikrein related peptidase 3,

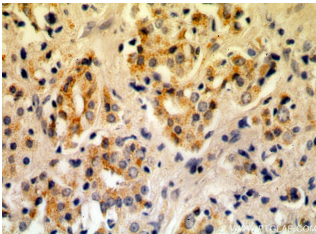
KLK2A1, KLK3, P 30 antigen,

Prostate specific antigen, PSA,

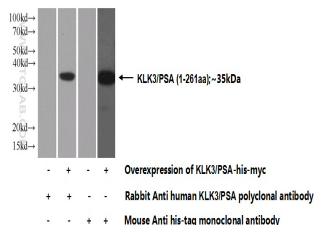
Semenogelase, Seminolin



Immunohistochemical of paraffin-embedded human prostate cancer using 10679-1-AP (KLK3, PSA antibody) at dilution of 1:50 (under 10x lens)



Immunohistochemical of paraffin-embedded human prostate cancer using 10679-1-AP (KLK3, PSA antibody) at dilution of 1:50 (under 40x lens)



Transfected HEK-293 cells were subjected to SDS PAGE followed by western blot with 10679-1-AP (KLK3, PSA Antibody) at dilution of 1:1000

### Background

Kallikreins are a subgroup of serine proteases having diverse physiological functions. Growing evidence suggests that many kallikreins are implicated in carcinogenesis and some have potential as novel cancer and other disease biomarkers. kallikrein-related peptidase 3, which is also called PSA (prostate-specific antigen) in the clinical setting, is useful in the diagnosis and monitoring of prostatic carcinoma. KLK3 has 5 isoforms produced by alternative splicing.

### Applications

Tested applications:	ELISA, IHC, WB
Species specificity:	Human; other species not tested.
Calculated KLK3/PSA MW:	29 kDa
Observed KLK3/PSA MW:	
Positive WB detected in	Transfected HEK-293 cells
Positive IHC detected in	Human prostate cancer tissue
Recommended dilution:	WB: 1:500-1:5000
	IHC: 1:20-1:200

Application key: WB = Western blotting, IHC = Immunohistochemistry, IF = Immunofluorescence, IP = Immunoprecipitation

### Immunogen information

Immunogen:	Ag1060
GenBank accession number:	BC005307
Gene ID (NCBI):	354
Full name:	Kallikrein-related peptidase 3

### Product information

Purification method:	Antigen affinity purification
Storage:	PBS with 0.1% sodium azide and 50% glycerol pH 7.3. Store at -20°C.