

CHST15 Polyclonal Antibody

Catalog number: 14298-1-AP

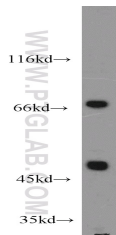
Size: 35 µg/150 µl

Source: Rabbit

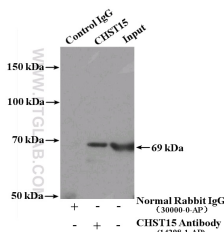
Isotype: IgG

Synonyms:

CHST15; BRAG, CHST15,
DKFZp781H1369, GALNAC4S
6ST, GALNAC4S6ST, hBRAG,
KIAA0598, RP11 47G11.1



mouse heart tissue were subjected to SDS PAGE followed by western blot with 14298-1-AP(CHST15 antibody) at dilution of 1:500



IP Result of anti-CHST15 (IP:14298-1-AP, 4µg; Detection:14298-1-AP 1:500) with Raji cells lysate 3200ug.

Applications

Tested applications:	ELISA, WB, IP
Cited applications:	IHC
Species specificity:	Human, Mouse, Rat; other species not tested.
Cited species:	Human
Calculated CHST15 MW:	65 kDa
Observed CHST15 MW:	49 kDa, 69 kDa
Positive WB detected in	Mouse heart tissue, Jurkat cells, mouse spleen tissue, Raji cells
Positive IP detected in	Raji cells
Recommended dilution:	WB: 1:200-1:2000 IP: 1:200-1:2000

Application key: WB = Western blotting, IHC = Immunohistochemistry, IF = Immunofluorescence, IP = Immunoprecipitation

Immunogen information

Immunogen:	Ag5679
GenBank accession number:	BC050540
Gene ID (NCBI):	51363
Full name:	Carbohydrate (N-acetylgalactosamine 4-sulfate 6-O) sulfotransferase 15

Product information

Purification method:	Antigen affinity purification
Storage:	PBS with 0.02% sodium azide and 50% glycerol pH 7.3. Store at -20°C.