

## TROVE2 Polyclonal Antibody

Catalog number: 12718-1-AP

Size: 20 µg/150 µl

Source: Rabbit

Isotype: IgG

Synonyms:

TROVE2; 60 kDa

ribonucleoprotein Ro, 60 kDa

Ro protein, Ro 60 kDa

autoantigen, RO60, RoRNP,

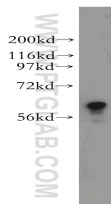
Sjogren syndrome antigen A2,

SS A, SSA2, TROVE domain

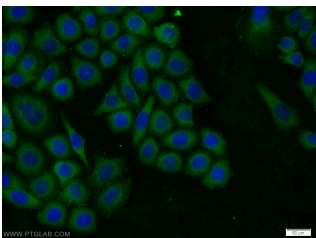
family member 2, TROVE

domain family, member 2,

TROVE2



MCF7 cells were subjected to SDS PAGE followed by western blot with 12718-1-AP(TROVE2 antibody) at dilution of 1:500



Immunofluorescent analysis of PC-3 cells using 12718-1-AP( TROVE2 Antibody) at dilution of 1:25 and Alexa Fluor 488-conjugated AffiniPure Goat Anti-Rabbit IgG(H+L)

### Applications

<b>Tested applications:</b>	ELISA, WB, IF
<b>Species specificity:</b>	Human,Mouse,Rat; other species not tested.
<b>Calculated TROVE2 MW:</b>	60 kDa
<b>Observed TROVE2 MW:</b>	60 kDa
<b>Positive WB detected in</b>	MCF7 cells, HeLa cells, mouse thymus tissue, PC-3 cells, rat spleen tissue
<b>Positive IF detected in</b>	PC-3 cells
<b>Recommended dilution:</b>	WB: 1:500-1:5000 IF: 1:10-1:100

Application key: WB = Western blotting, IHC = Immunohistochemistry, IF = Immunofluorescence, IP = Immunoprecipitation

### Immunogen information

<b>Immunogen:</b>	Ag3412
<b>GenBank accession number:</b>	BC036658
<b>Gene ID (NCBI):</b>	6738
<b>Full name:</b>	TROVE domain family, member 2

### Product information

<b>Purification method:</b>	Antigen affinity purification
<b>Storage:</b>	PBS with 0.1% sodium azide and 50% glycerol pH 7.3. Store at -20°C.