

## SHC4 Polyclonal Antibody

Catalog number: 12641-1-AP

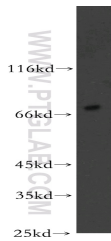
Size: 20 µg/150 µl

Source: Rabbit

Isotype: IgG

Synonyms:

SHC4; MGC34023; RaLP; SHCD



SH-SY5Y cells were subjected to SDS PAGE followed by western blot with 12641-1-AP(SHC4 Antibody) at dilution of 1:600

### Applications

Tested applications:	ELISA, WB
Species specificity:	Human, mouse; other species not tested.
Positive WB detected in:	SH-SY5Y cells, HepG2 cells, human brain tissue
Calculated SHC4 MW:	630aa,69kd
Observed SHC4 MW:	70-75kd
Recommended dilution:	WB: 1:200-1:2000

Application key: WB = Western blotting, IHC = Immunohistochemistry, IF = Immunofluorescence, IP = Immunoprecipitation, FC = Flow cytometry

### Immunogen information

Immunogen:	Ag3336
GenBank accession number:	BC033907
Gene ID (NCBI):	399694
Full name:	SHC (Src homology 2 domain containing) family, member 4

### Product information

Purification method:	Antigen affinity purification
Storage:	PBS with 0.02% sodium azide and 50% glycerol pH 7.3. Store at -20°C.