

## SLC4A4 Polyclonal Antibody

Catalog number: 11885-1-AP

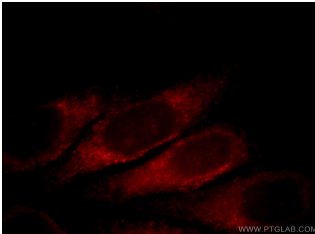
Size: 48 µg/150 µl

Source: Rabbit

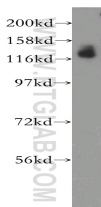
Isotype: IgG

Synonyms:

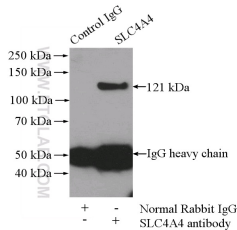
SLC4A4; DKFZp781H1314,  
hhNMC, HNBC1, KNBC, kNBC1,  
Na(+)/HCO<sub>3</sub>(-) cotransporter,  
NBC, NBC1, NBC2, NBCE1,  
pNBC, SLC4A4, SLC4A5



Immunofluorescent analysis of HepG2 cells, using SLC4A4 antibody 11885-1-AP at 1:25 dilution and Rhodamine-labeled goat anti-rabbit IgG (red).



HEK-293 cells were subjected to SDS PAGE followed by western blot with 11885-1-AP(SLC4A4 antibody) at dilution of 1:400



IP Result of anti-SLC4A4 (IP:11885-1-AP, 4µg; Detection:11885-1-AP 1:400) with HEK-293 cells lysate 1200µg.

### Applications

Tested applications:	ELISA, WB, IF, IP
Species specificity:	Human, Mouse, Rat; other species not tested.
Calculated SLC4A4 MW:	121 kDa
Observed SLC4A4 MW:	121 kDa
Positive WB detected in	HEK-293 cells, mouse kidney tissue
Positive IP detected in	HEK-293 cells
Positive IF detected in	HepG2 cells
Recommended dilution:	WB: 1:200-1:2000
	IP: 1:200-1:1000
	IF: 1:10-1:100

Application key: WB = Western blotting, IHC = Immunohistochemistry, IF = Immunofluorescence, IP = Immunoprecipitation

### Immunogen information

Immunogen:	Ag2490
GenBank accession number:	BC030977
Gene ID (NCBI):	8671
Full name:	Solute carrier family 4, sodium bicarbonate cotransporter, member 4

### Product information

Purification method:	Antigen affinity purification
Storage:	PBS with 0.1% sodium azide and 50% glycerol pH 7.3. Store at -20°C.