

## AMPK alpha 1 Polyclonal Antibody

Catalog number: 10929-2-AP

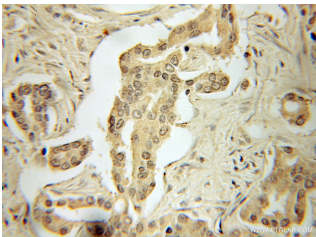
Size: 56 µg/150 µl

Source: Rabbit

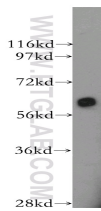
Isotype: IgG

Synonyms:

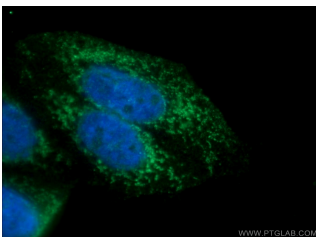
PRKAA1; AMPK, AMPK alpha, AMPK alpha 1, AMPK subunit alpha 1, AMPK1, AMPKα1, PRKAA1



Immunohistochemical of paraffin-embedded human prostate cancer using 10929-2-AP (PRKAA1 antibody) at dilution of 1:100 (under 10x lens)



HeLa cells were subjected to SDS PAGE followed by western blot with 10929-2-AP (PRKAA1 antibody) at dilution of 1:300



Immunofluorescent analysis of HepG2 cells using 10929-2-AP (AMPK alpha Antibody) at dilution of 1:25 and Alexa Fluor 488-conjugated AffiniPure Goat Anti-Rabbit IgG(H+L)

### Background

The mammalian 5-prime-AMP-activated protein kinase (AMPK) appears to play a role in protecting cells from stresses that cause ATP depletion by switching off ATP-consuming biosynthetic pathways. PRKAA1 is also named as AMPK1, ACACA kinase, HMGCGR kinase. It is a mammalian homologue of sucrose non-fermenting protein kinase (SNF-1), which belongs to a serine/threonine protein kinase family. It has 2 isoforms produced by alternative splicing.

### Applications

Tested applications:	ELISA, WB, IHC, IF
Cited applications:	WB
Species specificity:	Human, Mouse, Rat; other species not tested.
Cited species:	Human
Calculated AMPK alpha 1 MW:	63 kDa
Observed AMPK alpha 1 MW:	63 kDa
Positive WB detected in	HeLa cells, rat heart tissue
Positive IHC detected in	Human prostate cancer tissue
Positive IF detected in	HepG2 cells
Recommended dilution:	WB: 1:200-1:1000 IHC: 1:20-1:200 IF: 1:10-1:100

Application key: WB = Western blotting, IHC = Immunohistochemistry, IF = Immunofluorescence, IP = Immunoprecipitation

### Immunogen information

Immunogen:	Ag1367
GenBank accession number:	BC012622
Gene ID (NCBI):	5562
Full name:	Protein kinase, AMP-activated, alpha 1 catalytic subunit

### Product information

Purification method:	Antigen affinity purification
Storage:	PBS with 0.1% sodium azide and 50% glycerol pH 7.3. Store at -20°C.