

## CDC5L Polyclonal Antibody

Catalog number: 12974-1-AP

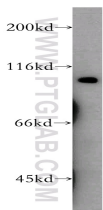
Size: 51 µg/150 µl

Source: Rabbit

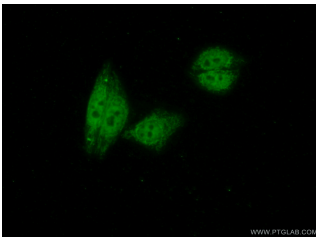
Isotype: IgG

Synonyms:

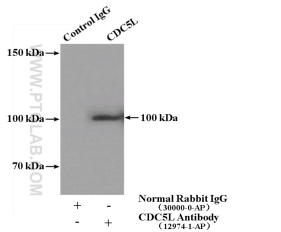
CDC5L; Cdc5 like protein,  
CDC5L, CEF1, dJ319D22.1,  
hCDC5, KIAA0432, PDC5RP,  
Pombe cdc5 related protein



human brain tissue were subjected to SDS PAGE followed by western blot with 12974-1-AP(CDC5L antibody) at dilution of 1:400



Immunofluorescent analysis of ( 10% Formaldehyde ) fixed HepG2 cells using 12974-1-AP( CDC5L Antibody) at dilution of 1:50 and Alexa Fluor 488-conjugated AffiniPure Goat Anti-Rabbit IgG(H+L)



IP Result of anti-CDC5L (IP:12974-1-AP, 4µg; Detection:12974-1-AP 1:600) with HepG2 cells lysate 4000µg.

### Applications

Tested applications:	ELISA, WB, IP, IF
Species specificity:	Human,Mouse,Rat; other species not tested.
Calculated CDC5L MW:	802aa,92 kDa
Observed CDC5L MW:	100 kDa
Positive WB detected in	Human brain tissue, HEK-293 cells, HepG2 cells, mouse brain tissue
Positive IP detected in	HepG2 cells
Positive IF detected in	HepG2 cells
Recommended dilution:	WB: 1:500-1:5000 IP: 1:200-1:2000 IF: 1:50-1:500

Application key: WB = Western blotting, IHC = Immunohistochemistry, IF = Immunofluorescence, IP = Immunoprecipitation

### Immunogen information

Immunogen:	Ag3578
GenBank accession number:	BC001568
Gene ID (NCBI):	988
Full name:	CDC5 cell division cycle 5-like (S. pombe)

### Product information

Purification method:	Antigen affinity purification
Storage:	PBS with 0.02% sodium azide and 50% glycerol pH 7.3. Store at -20°C.