

SUPV3L1 Polyclonal Antibody

Catalog number: 12826-1-AP

Size: 20 µg/150 µl

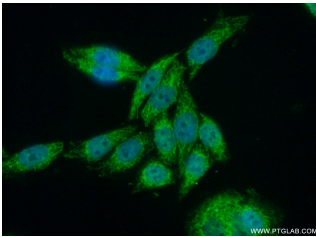
Source: Rabbit

Isotype: IgG

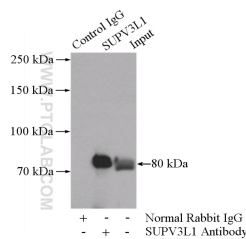
Synonyms:

SUPV3L1; SUPV3L1, SUV3,

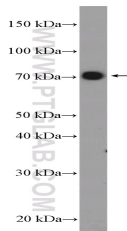
SUV3 like protein 1



Immunofluorescent analysis of (10% Formaldehyde) fixed HeLa cells using 12826-1-AP(SUPV3L1 Antibody) at dilution of 1:50 and Alexa Fluor 488-conjugated AffiniPure Goat Anti-Rabbit IgG(H+L)



IP Result of anti-SUPV3L1 (IP:12826-1-AP, 4µg; Detection:12826-1-AP 1:300) with HeLa cells lysate 1200µg.



PC-3 cells were subjected to SDS PAGE followed by western blot with 12826-1-AP(SUPV3L1 Antibody) at dilution of 1:300

Applications

Tested applications:	ELISA, IP, WB, IF
Species specificity:	Human,Mouse,Rat; other species not tested.
Calculated SUPV3L1 MW:	786aa,88 kDa
Observed SUPV3L1 MW:	70-80 kDa
Positive WB detected in	PC-3 cells, HeLa cells
Positive IP detected in	HeLa cells
Positive IF detected in	HeLa cells
Recommended dilution:	WB: 1:200-1:1000 IP: 1:200-1:1000 IF: 1:50-1:500

Application key: WB = Western blotting, IHC = Immunohistochemistry, IF = Immunofluorescence, IP = Immunoprecipitation

Immunogen information

Immunogen:	Ag3542
GenBank accession number:	BC036112
Gene ID (NCBI):	6832
Full name:	Suppressor of var1, 3-like 1 (S. cerevisiae)

Product information

Purification method:	Antigen affinity purification
Storage:	PBS with 0.1% sodium azide and 50% glycerol pH 7.3. Store at -20°C.