

CDC42 Polyclonal Antibody

Catalog number: 10155-1-AP

Size: 52 µg/150 µl

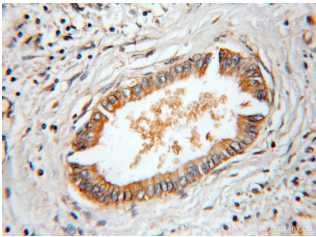
Source: Rabbit

Isotype: IgG

Synonyms:

CDC42; CDC42, CDC42Hs, G25K,

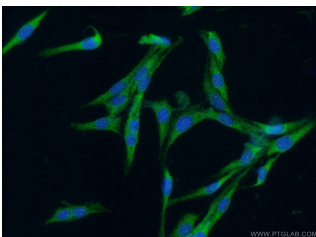
G25K GTP binding protein



Immunohistochemical of paraffin-embedded human pancreas cancer using 10155-1-AP(CDC42 antibody) at dilution of 1:50 (under 25x lens)



mouse brain tissue were subjected to SDS PAGE followed by western blot with 10155-1-AP(CDC42 antibody) at dilution of 1:0



Immunofluorescent analysis of (-20 Ethanol) fixed C6 cells using 10155-1-AP(CDC42 Antibody) at dilution of 1:50 and Alexa Fluor 488-conjugated AffiniPure Goat Anti-Rabbit IgG(H+L)

Background

Cdc42, the human homologue of the cell division cycle 42 of *Saccharomyces cerevisiae*, belongs to the Rho/Rac subfamily of Ras-like GTPases. It acts as molecular switches to regulate numerous cellular responses including the organization of the actin cytoskeleton, gene transcription, cell cycle progression, and membrane trafficking. The molecular weight is about 21 kd.

Applications

Tested applications:	ELISA, WB, IHC, IF
Cited applications:	IF, WB
Species specificity:	Human, Mouse, Rat; other species not tested.
Cited species:	Human, mouse, <i>S. litura</i>
Calculated CDC42 MW:	21 kDa
Observed CDC42 MW:	21 kDa
Positive WB detected in	Mouse brain tissue
Positive IHC detected in	Human pancreas cancer tissue, human gliomas tissue, human pancreas tissue, human skeletal muscle tissue
Positive IF detected in	C6 cells, HeLa cells
Recommended dilution:	WB: 1:200-1:1000 IHC: 1:20-1:200 IF: 1:20-1:200

Application key: WB = Western blotting, IHC = Immunohistochemistry, IF = Immunofluorescence, IP = Immunoprecipitation

Immunogen information

Immunogen:	Ag0207
GenBank accession number:	BC002711
Gene ID (NCBI):	998
Full name:	Cell division cycle 42 (GTP binding protein, 25kDa)

Product information

Purification method:	Antigen affinity purification
Storage:	PBS with 0.1% sodium azide and 50% glycerol pH 7.3. Store at -20°C.