

PICK1 Polyclonal Antibody

Catalog number: 10983-2-AP

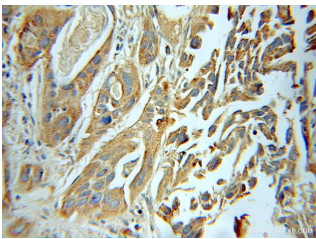
Size: 20 µg/150 µl

Source: Rabbit

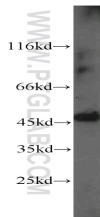
Isotype: IgG

Synonyms:

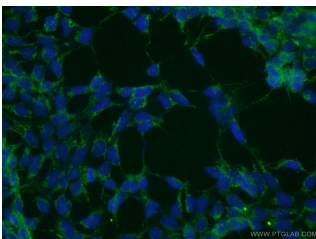
PICK1; PICK, PICK1, PRKCA binding protein, PRKABP



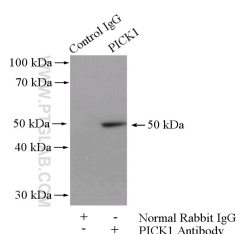
Immunohistochemical of paraffin-embedded human prostate cancer using 10983-2-AP(PICK1 antibody) at dilution of 1:50 (under 25x lens)



mouse brain tissue were subjected to SDS PAGE followed by western blot with 10983-2-AP(PICK1 antibody) at dilution of 1:500



Immunofluorescent analysis of HEK-293 cells using 10983-2-AP(PICK1 Antibody) at dilution of 1:50 and Alexa Fluor 488-conjugated AffiniPure Goat Anti-Rabbit IgG(H+L)



Background

Protein interacting with C kinase 1 (PICK1) was first cloned as a PKC-binding partner through yeast two hybrid system. PICK1 acts as a critical regulator of membrane receptors' subcellular trafficking to modulate neural processes such as learning and memory, and is widely expressed in brain, testis, heart, lung, liver, kidney and muscle. It probably binds to and organize the subcellular localization of a variety of membrane proteins containing some PDZ recognition sequence, for instance, PICK1 is a critical mediator of α -amino-3-hydroxy-5-methyl-4-isoxazolepropionic acid receptor (AMPA) trafficking in neural synapses. PICK1 expression on D-serine release and glutamate transport in astrocytes suggests a potential implication of PICK1 in the progression of amyotrophic lateral sclerosis (ALS). PICK1 may also participate in breast cancer development through inhibition of TGF- β signaling.

Applications

Tested applications:	ELISA, IHC, WB, IP, IF
Cited applications:	IF, IHC, WB
Species specificity:	Human, Mouse, Rat; other species not tested.
Cited species:	Human, mouse
Calculated PICK1 MW:	47 kDa
Observed PICK1 MW:	50-55 kDa
Positive WB detected in	Mouse brain tissue, human brain tissue
Positive IP detected in	Mouse brain tissue
Positive IHC detected in	Human prostate cancer tissue, human breast cancer tissue
Positive IF detected in	HEK-293 cells
Recommended dilution:	WB: 1:200-1:2000
	IP: 1:200-1:2000
	IHC: 1:20-1:200
	IF: 1:20-1:200

Application key: WB = Western blotting, IHC = Immunohistochemistry, IF = Immunofluorescence, IP = Immunoprecipitation

Immunogen information

Immunogen:	Ag1443
GenBank accession number:	BC017561
Gene ID (NCBI):	9463
Full name:	Protein interacting with PRKCA 1

Product information

Purification method:	Antigen affinity purification
Storage:	PBS with 0.1% sodium azide and 50% glycerol pH 7.3. Store at -20°C.

IP Result of anti-PICK1
(IP:10983-2-AP, 4ug;
Detection:10983-2-AP 1:500)
with mouse brain tissue lysate
4400ug.