

## LAMA4 Polyclonal Antibody

Catalog number: 10465-1-AP

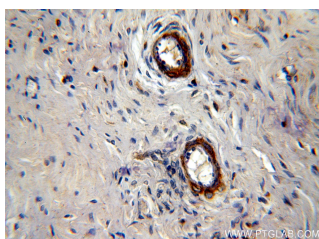
Size: 22 µg/150 µl

Source: Rabbit

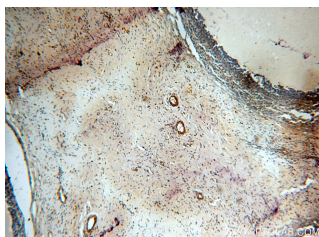
Isotype: IgG

Synonyms:

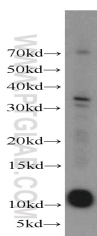
LAMA4; DKFZp686D23145,  
LAMA3, LAMA4, LAMA4\* 1,  
Laminin 14 subunit alpha,  
Laminin 8 subunit alpha,  
Laminin 9 subunit alpha,  
Laminin subunit alpha 4,  
laminin, alpha 4



Immunohistochemical of paraffin-embedded human ovary using 10465-1-AP(LAMA4 antibody) at dilution of 1:100 (under 40x lens)



Immunohistochemical of paraffin-embedded human ovary using 10465-1-AP(LAMA4 antibody) at dilution of 1:100 (under 10x lens)



human heart tissue were subjected to SDS PAGE followed by western blot with 10465-1-AP(LAMA4 antibody) at dilution of 1:1000

### Background

Laminin is a basement membrane glycoprotein composed of three nonidentical chains, A, B1, and B2 (PMID: 7959779). LAMA4 (laminin, alpha 4), an A chain variant, is a subunit of laminin-8 (laminin-411), laminin-9 (laminin-421) and laminin-14 (laminin-423) (PMID: 10842354; 10964957). LAMA4 is widely distributed in developing and adult human tissues, and mainly localized to mesenchyme-derived tissues (PMID: 12133914). It may have a role in formation and function of endothelium, transmigration of inflammatory cells through endothelium, and invasion of certain tumors (PMID: 17533363).

### Applications

Tested applications:	ELISA, WB, IHC
Cited applications:	IHC
Species specificity:	Human; other species not tested.
Cited species:	Human
Calculated LAMA4 MW:	13 kDa
Observed LAMA4 MW:	11-13 kDa
Positive WB detected in	Human heart tissue, human skeletal muscle tissue
Positive IHC detected in	Human ovary tissue
Recommended dilution:	WB: 1:200-1:2000 IHC: 1:20-1:200

Application key: WB = Western blotting, IHC = Immunohistochemistry, IF = Immunofluorescence, IP = Immunoprecipitation

### Immunogen information

Immunogen:	Ag0736
GenBank accession number:	BC004241
Gene ID (NCBI):	3910
Full name:	Laminin, alpha 4

### Product information

Purification method:	Antigen affinity purification
Storage:	PBS with 0.1% sodium azide and 50% glycerol pH 7.3. Store at -20°C.