

BTBD6 Polyclonal Antibody

Catalog number: 13776-1-AP

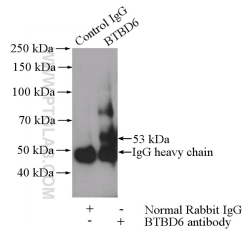
Size: 27 µg/150 µl

Source: Rabbit

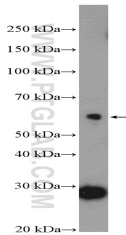
Isotype: IgG

Synonyms:

BTBD6; BDPL, BTB (POZ) domain containing 6, BTBD6, Lens BTB domain protein



IP Result of anti-BTBD6 (IP:13776-1-AP, 4µg; Detection:13776-1-AP 1:300) with Y79 cells lysate 800ug.



HepG2 cells were subjected to SDS PAGE followed by western blot with 13776-1-AP(BTBD6 Antibody) at dilution of 1:300

Applications

Tested applications:	ELISA, IP, WB
Species specificity:	Human,Mouse,Rat; other species not tested.
Calculated BTBD6 MW:	410aa,46 kDa
Observed BTBD6 MW:	53-58 kDa
Positive WB detected in	HepG2 cells
Positive IP detected in	Y79 cells
Recommended dilution:	WB: 1:200-1:1000
	IP: 1:200-1:1000

Application key: WB = Western blotting, IHC = Immunohistochemistry, IF = Immunofluorescence, IP = Immunoprecipitation

Immunogen information

Immunogen:	Ag4766
GenBank accession number:	BC042525
Gene ID (NCBI):	90135
Full name:	BTB (POZ) domain containing 6

Product information

Purification method:	Antigen affinity purification
Storage:	PBS with 0.1% sodium azide and 50% glycerol pH 7.3. Store at -20°C.