

## RRM1 Polyclonal Antibody

Catalog number: 10526-1-AP

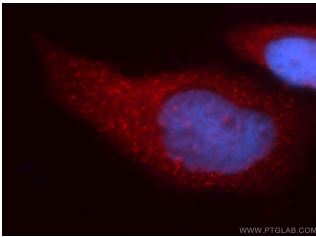
Size: 33 µg/150 µl

Source: Rabbit

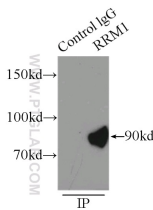
Isotype: IgG

Synonyms:

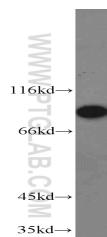
RRM1; R1, ribonucleotide reductase M1, RIR1, RR1, RRM1



Immunofluorescent analysis of HeLa cells, using RRM1 antibody 10526-1-AP at 1:50 dilution and Rhodamine-labeled goat anti-rabbit IgG (red). Blue pseudocolor = DAPI (fluorescent DNA dye).



IP Result of anti-RRM1 (IP:10526-1-AP, 5µg; Detection:10526-1-AP 1:800) with K-562 cells lysate 8000µg.



HeLa cells were subjected to SDS PAGE followed by western blot with 10526-1-AP(RRM1 antibody) at dilution of 1:2000

### Background

Ribonucleoside-diphosphate reductase functions as a heterodimer of a large and a small subunits in deoxyribonucleotide synthesis. RRM1 constitutes to the large subunit (R1) of ribonucleotide reductase, and it can either form heterodimer with small subunit RRM or RRM2B(PMID:16376858). RRM1 provides the precursors necessary for DNA synthesis. RRM1 can not be detected in quiescent cells, while its mRNA and protein are present throughout the cell cycle in cycling cells(PMID:8188248). Researches showed that RRM1 is involved in carcinogenesis, tumor progression, and the resistance of non-small-cell lung cancer (NSCLC) to treatment. Low level expression of RRM1 in NSCLC is associated with poor survival(PMID:17314339).

### Applications

Tested applications:	ELISA, IP, WB, IF, FC, IHC
Cited applications:	IF, IHC, WB
Species specificity:	Human, Mouse, Rat, Monkey; other species not tested.
Cited species:	Human, Xenopus
Calculated RRM1 MW:	90 kDa
Observed RRM1 MW:	90 kDa
Positive WB detected in	HeLa cells, A549, A549 cells, BxPC-3 cells, K-562 cells, rat skeletal muscle tissue
Positive IP detected in	K-562 cells
Positive IHC detected in	Human lung cancer tissue
Positive IF detected in	HeLa cells, HepG2 cells, MCF-7 cells
Positive FC detected in	HeLa cells
Recommended dilution:	WB: 1:1000-1:10000 IP: 1:200-1:2000 IHC: 1:20-1:200 IF: 1:20-1:200 FC: N/A

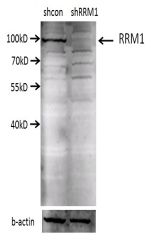
Application key: WB = Western blotting, IHC = Immunohistochemistry, IF = Immunofluorescence, IP = Immunoprecipitation

### Immunogen information

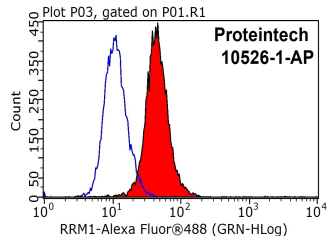
Immunogen:	Ag0789
GenBank accession number:	BC006498
Gene ID (NCBI):	6240
Full name:	Ribonucleotide reductase M1

### Product information

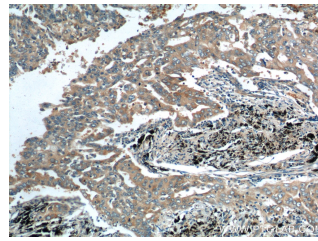
Purification method:	Antigen affinity purification
Storage:	PBS with 0.1% sodium azide and 50% glycerol pH 7.3. Store at -20°C.



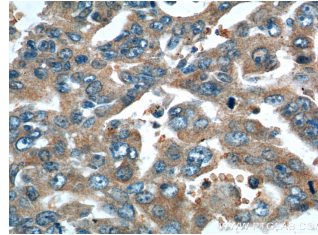
**A549 cells (shcontrol and shRNA of RRM1) were subjected to SDS PAGE followed by western blot with 10526-1-AP (RRM1 antibody) at dilution of 1:2000. (Data provided by Angran Biotech (www.miRNAlab.com)).**



**1X10<sup>6</sup> HeLa cells were stained with .2ug RRM1 antibody (10526-1-AP, red) and control antibody (blue). Fixed with 4% PFA blocked with 3% BSA (30 min). Alexa Fluor 488-conjugated AffiniPure Goat Anti-Rabbit IgG(H+L) with dilution 1:1000.**



**Immunohistochemistry of paraffin-embedded human lung cancer tissue slide using 10526-1-AP ( RRM1 Antibody) at dilution of 1:200 (under 10x lens).**



**Immunohistochemistry of paraffin-embedded human lung cancer tissue slide using 10526-1-AP ( RRM1 Antibody) at dilution of 1:200 (under 40x lens).**