

CPNE3 Polyclonal Antibody

Catalog number: 11186-1-AP

Size: 38 µg/150 µl

Source: Rabbit

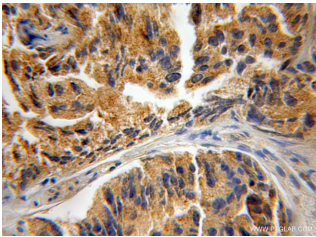
Isotype: IgG

Synonyms:

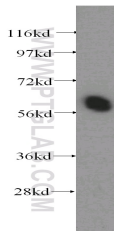
CPNE3; Copine 3, copine III,

CPN3, CPNE3, KIAA0636,

PRO1071



Immunohistochemical of paraffin-embedded human prostate cancer using 11186-1-AP (CPNE3 antibody) at dilution of 1:50 (under 10x lens)



Y79 cells were subjected to SDS PAGE followed by western blot with 11186-1-AP (CPNE3 antibody) at dilution of 1:400

Background

Copines are a family of evolutionarily conserved calcium-dependent phospholipid-binding proteins (PMID: 9430674). They contain two Ca(2+)- and phospholipid-binding domains known as C2 domains. Copines are potentially involved in regulating membrane trafficking and in protein-protein interactions.

Applications

Tested applications:	ELISA, WB, IHC
Species specificity:	Human, Mouse, Rat; other species not tested.
Calculated CPNE3 MW:	60 kDa
Observed CPNE3 MW:	60 kDa
Positive WB detected in	Y79 cells
Positive IHC detected in	Human prostate cancer tissue
Recommended dilution:	WB: 1:200-1:2000 IHC: 1:20-1:200

Application key: WB = Western blotting, IHC = Immunohistochemistry, IF = Immunofluorescence, IP = Immunoprecipitation

Immunogen information

Immunogen:	Ag1634
GenBank accession number:	BC036242
Gene ID (NCBI):	8895
Full name:	Copine III

Product information

Purification method:	Antigen affinity purification
Storage:	PBS with 0.1% sodium azide and 50% glycerol pH 7.3. Store at -20°C.