

## REC8 Polyclonal Antibody

Catalog number: 10793-1-AP

Size: 32 µg/150 µl

Source: Rabbit

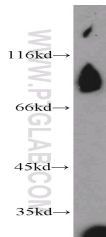
Isotype: IgG

Synonyms:

REC8; Cohesin Rec8p, HR21spB,

REC8, REC8 homolog (yeast),

REC8L1, Rec8p



human testis tissue were subjected to SDS PAGE followed by western blot with 10793-1-AP(REC8 antibody) at dilution of 1:1000

### Background

REC8, also named as Rec8p and REC8L1, belongs to the rad21 family. This cohesin protein is required during meiosis for separation of sister chromatids and homologous chromosomes. Proteolytic cleavage of REC8 on chromosome arms by separin during anaphase I allows for homologous chromosome separation in meiosis I and cleavage of REC8 on centromeres during anaphase II allows for sister chromatid separation in meiosis II. Rec8 is present in an unphosphorylated form early in meiotic prophase but is phosphorylated prior to meiosis I. This antibody is a rabbit polyclonal antibody raised against residues near the C terminus of human REC8. This antibody can recognize the monomeric, non-phosphorylated form(63-70kd) of REC8 and other forms(80-100kd) which represent either posttranslationally modified forms or alternative transcript products (PMID: 12615909,19463812).

### Applications

Tested applications:	ELISA, WB
Cited applications:	IF, WB
Species specificity:	Human, Mouse; other species not tested.
Cited species:	Human, mouse
Calculated REC8 MW:	63 kDa
Observed REC8 MW:	85-95kd
Positive WB detected in	Human testis tissue, K-562 cells
Recommended dilution:	WB: 1:500-1:5000

Application key: WB = Western blotting, IHC = Immunohistochemistry, IF = Immunofluorescence, IP = Immunoprecipitation

### Immunogen information

Immunogen:	Ag1250
GenBank accession number:	BC010887
Gene ID (NCBI):	9985
Full name:	REC8 homolog (yeast)

### Product information

Purification method:	Antigen affinity purification
Storage:	PBS with 0.1% sodium azide and 50% glycerol pH 7.3. Store at -20°C.