

## GATM Polyclonal Antibody

Catalog number: 12801-1-AP

Size: 20 µg/150 µl

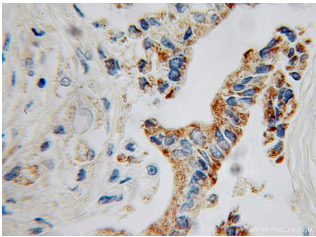
Source: Rabbit

Isotype: IgG

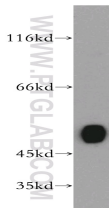
Synonyms:

GATM; AGAT, AT, GATM,

Transamidinase



Immunohistochemical of paraffin-embedded human pancreas cancer using 12801-1-AP (GATM antibody) at dilution of 1:100 (under 10x lens)



mouse kidney tissue were subjected to SDS PAGE followed by western blot with 12801-1-AP (GATM antibody) at dilution of 1:300

### Applications

Tested applications:	ELISA, WB, IHC
Species specificity:	Human, Mouse, Rat; other species not tested.
Calculated GATM MW:	423aa, 48 kDa
Observed GATM MW:	48 kDa
Positive WB detected in	Mouse kidney tissue, human kidney tissue, rat kidney tissue
Positive IHC detected in	Human pancreas cancer tissue
Recommended dilution:	WB: 1:500-1:5000 IHC: 1:20-1:200

Application key: WB = Western blotting, IHC = Immunohistochemistry, IF = Immunofluorescence, IP = Immunoprecipitation

### Immunogen information

Immunogen:	Ag3754
GenBank accession number:	BC004141
Gene ID (NCBI):	2628
Full name:	Glycine amidinotransferase (L-arginine:glycine amidinotransferase)

### Product information

Purification method:	Antigen affinity purification
Storage:	PBS with 0.1% sodium azide and 50% glycerol pH 7.3. Store at -20°C.