

Cyclin H Polyclonal Antibody

Catalog number: 10718-1-AP

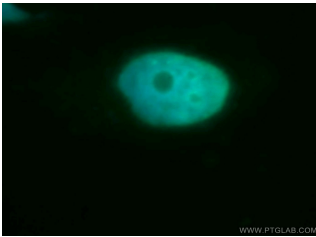
Size: 28 µg/150 µl

Source: Rabbit

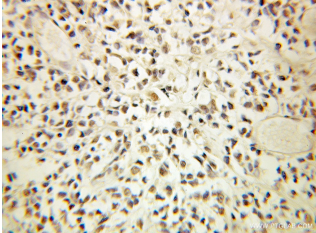
Isotype: IgG

Synonyms:

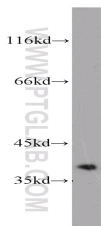
CCNH; CAK, CCNH, cyclin H,
MO15 associated protein, p34,
p37



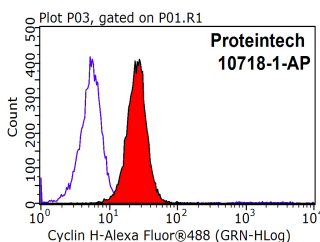
Immunofluorescent analysis of SH-SY5Y cells, using CCNH antibody 10718-1-AP at 1:50 dilution and FITC-labeled donkey anti-rabbit IgG(green). Blue pseudocolor = DAPI (fluorescent DNA dye).



Immunohistochemical of paraffin-embedded human ovary tumor using 10718-1-AP(CCNH antibody) at dilution of 1:100 (under 10x lens)



A375 cells were subjected to SDS PAGE followed by western blot with 10718-1-AP(CCNH antibody) at dilution of 1:1000



1X10⁶ SH-SY5Y cells were

Applications

Tested applications:	ELISA, WB, IHC, IF, FC, IP
Species specificity:	Human, Mouse, Rat; other species not tested.
Calculated Cyclin H MW:	38 kDa
Observed Cyclin H MW:	38 kDa
Positive WB detected in	A375 cells, A431 cells, HeLa cells, Jurkat cells, K-562 cells, mouse brain tissue, NIH/3T3 cells
Positive IP detected in	HeLa cells
Positive IHC detected in	Human ovary tumor tissue
Positive IF detected in	SH-SY5Y cells
Positive FC detected in	SH-SY5Y cells
Recommended dilution:	WB: 1:500-1:5000 IP: 1:500-1:5000 IHC: 1:20-1:200 IF: 1:20-1:200 FC: N/A

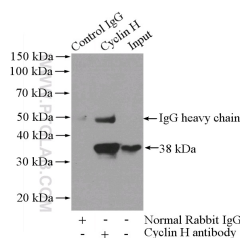
Application key: WB = Western blotting, IHC = Immunohistochemistry, IF = Immunofluorescence, IP = Immunoprecipitation

Immunogen information

Immunogen:	Ag1088
GenBank accession number:	BC005280
Gene ID (NCBI):	902
Full name:	Cyclin H

Product information

Purification method:	Antigen affinity purification
Storage:	PBS with 0.1% sodium azide and 50% glycerol pH 7.3. Store at -20°C.



IP Result of anti-CCNH

stained with 0.2ug CCNH antibody (10718-1-AP, red) and control antibody (blue). Fixed with 90% MeOH blocked with 3% BSA (30 min). Alexa Fluor 488-conjugated AffiniPure Goat Anti-Rabbit IgG(H+L) with dilution 1:100.

(IP:10718-1-AP, 4ug; Detection:10718-1-AP 1:1000) with HeLa cells lysate 1200ug.