

Alpha E catenin Polyclonal Antibody

Catalog number: 12831-1-AP

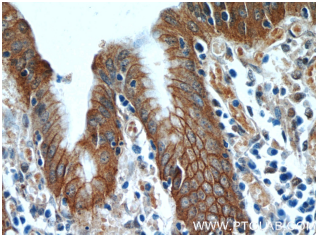
Size: 62 µg/150 µl

Source: Rabbit

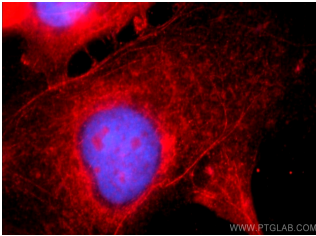
Isotype: IgG

Synonyms:

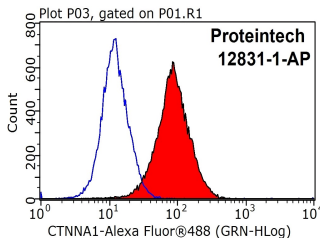
CTNNA1; alpha catenin, Alpha E catenin, Cadherin associated protein, CAP102, Catenin alpha 1, CTNNA1, α-catenin, α-E-catenin, αE-catenin



Immunohistochemistry of paraffin-embedded human stomach tissue slide using 12831-1-AP (CTNNA1 Antibody) at dilution of 1:50 (under 40x lens)



Immunofluorescent analysis of A431 cells using 12831-1-AP (CTNNA1 Antibody) at dilution of 1:25 and Rhodamine-Goat anti-Rabbit IgG



1X10⁶ MCF-7 cells were stained with 0.2µg CTNNA1 antibody (12831-1-AP, red) and control antibody (blue). Fixed with 90% MeOH blocked with 3% BSA (30 min). Alexa Fluor 488-conjugated AffiniPure Goat Anti-Rabbit IgG(H+L) with dilution 1:1000.

Background

Alpha catenin is an essential component of adherens junctions that connects E-cadherin-β-catenin complexes with the actin cytoskeleton. It also recruits a range of other important proteins to developing intercellular junctions. Three alpha catenins exist in human: alpha-E-catenin, alpha-N-catenin, and alpha-T-catenin, which share substantial amino-acid sequence similarity but have distinct tissue distribution. alpha-E-catenin is ubiquitously expressed, alpha-N-catenin is restricted to neuronal tissue, and alpha-T-catenin is primarily expressed in heart tissue. Reduced levels of alpha-E-catenin protein seem to be characteristic of many different human cancers, including malignant tumours of the breast, colon, stomach, oesophagus, bladder and liver. In addition, the loss of alpha-E-catenin often correlates with the degree of tumour differentiation and metastasis.

Applications

Tested applications:	ELISA, WB, IHC, IF, FC, IP
Cited applications:	WB
Species specificity:	Human, Mouse, Rat; other species not tested.
Cited species:	Human
Calculated Alpha E catenin MW:	906aa, 100 kDa
Observed Alpha E catenin MW:	100 kDa
Positive WB detected in	Mouse uterus tissue
Positive IP detected in	Mouse brain tissue
Positive IHC detected in	Human stomach tissue, human colon tissue, human pancreas cancer tissue
Positive IF detected in	A431 cells
Positive FC detected in	MCF-7 cells
Recommended dilution:	WB: 1:1000-1:10000 IP: 1:200-1:2000 IHC: 1:20-1:200 IF: 1:10-1:100 FC: N/A

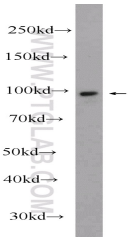
Application key: WB = Western blotting, IHC = Immunohistochemistry, IF = Immunofluorescence, IP = Immunoprecipitation

Immunogen information

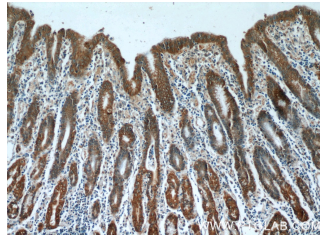
Immunogen:	Ag3565
GenBank accession number:	BC031262
Gene ID (NCBI):	1495
Full name:	Catenin (cadherin-associated protein), alpha 1, 102kDa

Product information

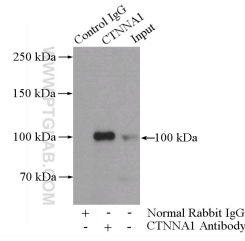
Purification method:	Antigen affinity purification
Storage:	PBS with 0.1% sodium azide and 50% glycerol pH 7.3. Store at -20°C.



mouse uterus tissue were subjected to SDS PAGE followed by western blot with 12831-1-AP(CTNNA1 Antibody) at dilution of 1:2000



Immunohistochemistry of paraffin-embedded human stomach tissue slide using 12831-1-AP(CTNNA1 Antibody) at dilution of 1:50 (under 10x lens)



IP Result of anti-CTNNA1 (IP:12831-1-AP, 4ug; Detection:12831-1-AP 1:700) with mouse brain tissue lysate 4000ug.