

GABARAPL1-Specific Polyclonal Antibody

Catalog number: 11010-1-AP

Size: 37 µg/150 µl

Source: Rabbit

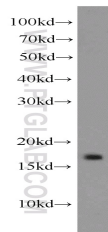
Isotype: IgG

Synonyms:

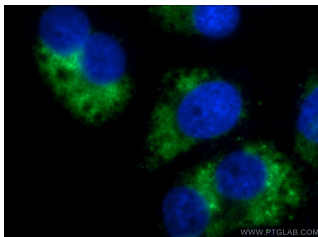
GABARAPL1; APG8 LIKE,

APG8L, ATG8, ATG8L,

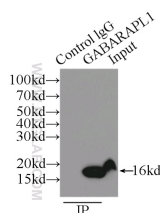
GABARAPL1, GEC 1, GEC1



rat brain tissue were subjected to SDS PAGE followed by western blot with 11010-1-AP(ATG8L antibody) at dilution of 1:1000



Immunofluorescent analysis of Chloroquine treated HepG2 cells using 11010-1-AP(ATG8L Antibody) at dilution of 1:50 and Alexa Fluor 488-conjugated AffiniPure Goat Anti-Rabbit IgG(H+L)



IP Result of anti-ATG8L (IP:11010-1-AP, 3µg; Detection:11010-1-AP 1:500) with mouse liver tissue lysate 5000µg.

Background

GABARAPL1 (GABARAP-like protein 1), also named as ATG8, GEC1, APG8L, ATG8L and APG8-LIKE, is a member of GABARP (GABAA receptor-associated protein) family. GABARAPL1 was initially identified as estrogen-regulated gene and the protein acts in receptor and vesicle transport. It's also involved in the process of autophagy like GABARAP and GABARAPL2, and may be considered as an autophagic marker. It is expressed at very high levels in the brain, heart, peripheral blood leukocytes, liver, kidney, placenta and skeletal muscle and at very low levels in thymus and small intestine. The antibody is specific to GABARAPL1, and it doesn't recognize the recombinant GABARAP and GABARAPL2.

Applications

Tested applications:	ELISA, WB, IHC, IP, IF, FC
Cited applications:	IF, IHC, WB
Species specificity:	Human, Mouse, Rat; other species not tested.
Cited species:	Human, monkey, mouse, rat
Calculated GABARAPL1-Specific MW:	14 kDa
Observed GABARAPL1-Specific MW:	16 kDa
Positive WB detected in	Rat brain tissue, HepG2 cells, human heart tissue, mouse liver tissue
Positive IP detected in	Mouse liver tissue
Positive IHC detected in	Human ovary tumor tissue, human liver tissue
Positive IF detected in	Chloroquine treated HepG2 cells
Positive FC detected in	HepG2 cells
Recommended dilution:	WB: 1:500-1:5000 IP: 1:200-1:2000 IHC: 1:20-1:200 IF: 1:20-1:200 FC: N/A

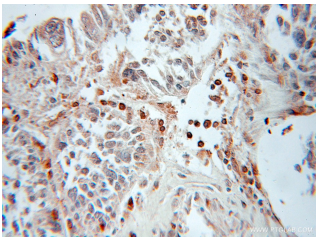
Application key: WB = Western blotting, IHC = Immunohistochemistry, IF = Immunofluorescence, IP = Immunoprecipitation

Immunogen information

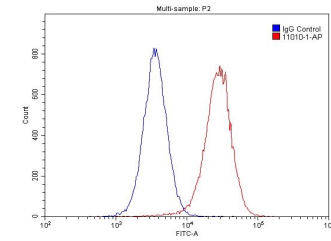
Immunogen:	Ag1473
GenBank accession number:	BC009309
Gene ID (NCBI):	23710
Full name:	GABA(A) receptor-associated protein like 1

Product information

Purification method:	Antigen affinity purification
Storage:	PBS with 0.1% sodium azide and 50% glycerol pH 7.3. Store at -20°C.



Immunohistochemical of paraffin-embedded human ovary tumor using 11010-1-AP(ATG8L antibody) at dilution of 1:50 (under 10x lens)



1X10⁶ HepG2 cells were stained with 0.2ug ATG8L antibody (11010-1-AP, red) and control antibody (blue). Fixed with 4% PFA blocked with 3% BSA (30 min). Alexa Fluor 488-conjugated AffiniPure Goat Anti-Rabbit IgG(H+L) with dilution 1:1500.