

## Human IgA Heavy Chain Polyclonal Antibody

Catalog number: 11449-1-AP

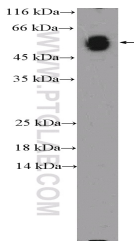
Size: 32 µg/150 µl

Source: Rabbit

Isotype: IgG

Synonyms:

IGHA1;



human plasma (0.3 µg) tissue were subjected to SDS PAGE followed by western blot with 11449-1-AP (Human IgA Antibody) at dilution of 1:1000. (1 Sec exposure)

### Background

Ig alpha is the major immunoglobulin class in body secretions. It may serve both to defend against local infection and to prevent access of foreign antigens to the general immunologic system. This antibody recognizes the Chain C region of human Ig alpha-1 (IGHA1).

### Applications

Tested applications: ELISA, WB

Species specificity: Human; other species not tested.

Calculated Human IgA Heavy 496aa, 53 kDa

Chain MW:

Observed Human IgA Heavy 53 kDa

Chain MW:

Positive WB detected in Human plasma tissue, human lung tissue

Recommended dilution: WB: 1:5000-1:50000

Application key: WB = Western blotting, IHC = Immunohistochemistry, IF = Immunofluorescence, IP = Immunoprecipitation

### Immunogen information

Immunogen: Ag2007

GenBank accession number: BC016369

Gene ID (NCBI): 3493

Full name: Immunoglobulin heavy constant alpha 1

### Product information

Purification method: Antigen affinity purification

Storage: PBS with 0.1% sodium azide and 50% glycerol pH 7.3. Store at -20°C.