

PDE9A Polyclonal Antibody

Catalog number: 12648-1-AP

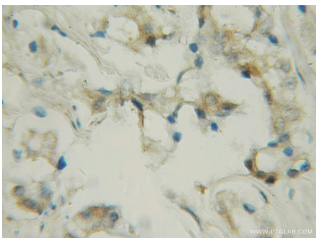
Size: 22 µg/150 µl

Source: Rabbit

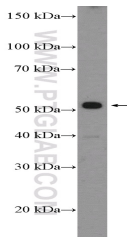
Isotype: IgG

Synonyms:

PDE9A; HSPDE9A2, PDE9A,
phosphodiesterase 9A



Immunohistochemical of paraffin-embedded human prostate cancer using 12648-1-AP (PDE9A antibody) at dilution of 1:50 (under 10x lens)



mouse testis tissue were subjected to SDS PAGE followed by western blot with 12648-1-AP (PDE9A Antibody) at dilution of 1:300

Background

Cyclic nucleotide phosphodiesterases (PDEs), which hydrolyze the intracellular second messengers cAMP and cGMP to their corresponding monophosphates, play an important role in signal transduction by regulating the intracellular concentration of cyclic nucleotides. PDE9A plays a role in signal transduction by regulating the intracellular concentration of these cyclic nucleotides. Multiple transcript variants encoding several different isoforms have been found for this gene. This protein has 16 isoforms with the MW between 44 kDa and 65 kDa.

Applications

Tested applications:	ELISA, IHC, WB
Species specificity:	Human, Mouse, Rat; other species not tested.
Calculated PDE9A MW:	68 kDa
Observed PDE9A MW:	50 kDa
Positive WB detected in	Mouse testis tissue, mouse skeletal muscle tissue
Positive IHC detected in	Human prostate cancer tissue
Recommended dilution:	WB: 1:200-1:1000 IHC: 1:20-1:200

Application key: WB = Western blotting, IHC = Immunohistochemistry, IF = Immunofluorescence, IP = Immunoprecipitation

Immunogen information

Immunogen:	Ag3372
GenBank accession number:	BC009047
Gene ID (NCBI):	5152
Full name:	Phosphodiesterase 9A

Product information

Purification method:	Antigen affinity purification
Storage:	PBS with 0.1% sodium azide and 50% glycerol pH 7.3. Store at -20°C.