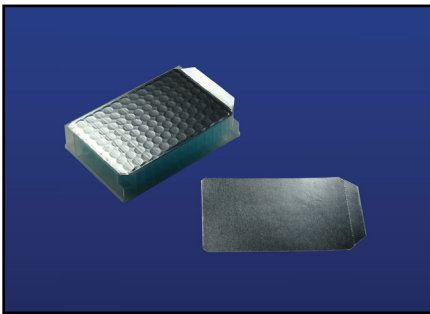


## PlateSeal™ SubZero™ Foil



### PlateSeal™ SubZero™ Foil

**High performance under extreme conditions**

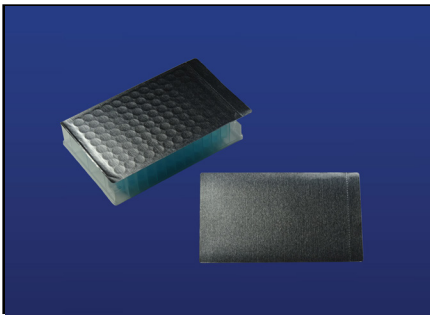
**Application:**

Ideal for long-term storage, light sensitive assays and robotics

**Temperature Range:**

-80°C to +120°C

Catalog #	Description	Quantity
PS-FOILC-100	SubZero Foil	100 Sheets



### PlateSeal™ SubZero™ Foil, X-Large

**High performance under extreme conditions**

**Application:**

Ideal for long-term storage and light sensitive assays

**Temperature Range:**

-80°C to +120°C

Catalog #	Description	Quantity
PS-FOILCXL-100	SubZero Foil, X-Large	100 Sheets

## Features and Benefits

- ▶ Certified DNase- & RNase- free
- ▶ Excellent chemical resistance (e.g. DMSO)
- ▶ Specially formulated adhesive provides an extremely strong bond which minimizes evaporation and prevents well-to-well contamination
- ▶ 1.9mil thick aluminum foil minimizes shredding during removal and is ideal for cold storage
- ▶ Available in two sizes:
  - Standard cut is recommended for all plate types
  - Standard cut features chamfered corners; foil does not overhang plate for robotics applications and tight storage conditions
  - X-Large cut is recommended for deep well plates
  - X-Large cut is designed for greater coverage; results in a more complete seal around the edges of the plate which can reduce evaporation
  - X-Large cut allows for easier positioning of the foil to the plate via edge of plate alignment vs. centering
- ▶ A single end-tab makes application and plate alignment easier because the natural curl of the foil is minimized; partially remove the liner at the single end-tab, apply a section to the plate, then peel back the remainder of the liner while applying the foil
- ▶ Conformable foil allows visual verification of seal security
- ▶ Pierceable with pipet tips and robotic probes for direct sample retrieval
- ▶ Removes cleanly from plate surfaces with no adhesive stringing or residue